

## HTR2C Antibody

Catalog No: #37404

Orders: order@signalwayantibody.com

Support: tech@signalwayantibody.com

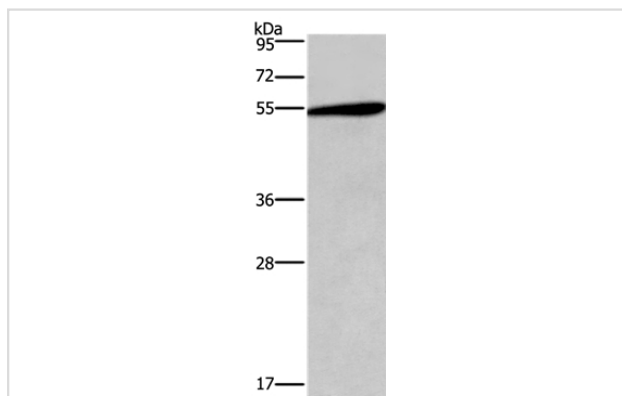
## Description

Product Name	HTR2C Antibody
Host Species	Rabbit
Clonality	Polyclonal
Purification	Antigen affinity purification.
Applications	WB
Species Reactivity	Hu
Specificity	The antibody detects endogenous levels of total HTR2C protein.
Immunogen Type	Peptide
Immunogen Description	Synthetic peptide corresponding to residues near the C terminal of human 5-hydroxytryptamine (serotonin) receptor 2C, G protein-coupled
Target Name	HTR2C
Other Names	HTR1C; 5-HT2C; 5HTR2C; 5-HTR2C
Accession No.	Swiss-Prot#: P28335NCBI Gene ID: 3358Gene Accssion: NP_000859
Uniprot	P28335
GeneID	3358;
SDS-PAGE MW	52kd
Concentration	2mg/ml
Formulation	Rabbit IgG in pH7.4 PBS, 0.05% NaN <sub>3</sub> , 40% Glycerol.
Storage	Store at -20°C

## Application Details

Western blotting: 1:200-1:1000

## Images



Gel: 8%SDS-PAGE  
 Lysate: 60ug Jurkat cell  
 Primary antibody: 1/300 dilution  
 Secondary antibody dilution: 1/8000  
 Exposure time: 1 minute

## Background

Serotonin (5-hydroxytryptamine, 5-HT), a neurotransmitter, elicits a wide array of physiological effects by binding to several receptor subtypes,

including the 5-HT2 family of seven-transmembrane-spanning, G-protein-coupled receptors, which activate phospholipase C and D signaling pathways. This gene encodes the 2C subtype of serotonin receptor and its mRNA is subject to multiple RNA editing events, where genomically encoded adenosine residues are converted to inosines.?

---

Note: This product is for in vitro research use only