

## ACTA2 Antibody

Catalog No: #37408

Orders: order@signalwayantibody.com

Support: tech@signalwayantibody.com

## Description

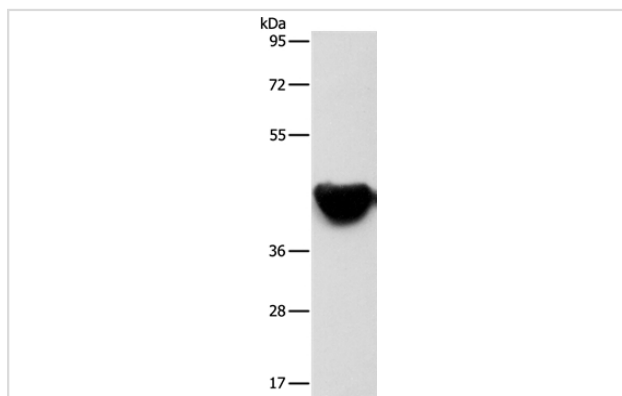
Product Name	ACTA2 Antibody
Host Species	Rabbit
Clonality	Polyclonal
Purification	Antigen affinity purification.
Applications	WB IHC
Species Reactivity	Hu Ms Rt
Specificity	The antibody detects endogenous levels of total ACTA2 protein.
Immunogen Type	Peptide
Immunogen Description	Synthetic peptide corresponding to residues near the N terminal of human actin, alpha 2, smooth muscle, aorta
Target Name	ACTA2
Other Names	AAT6; ACTSA; MYMY5
Accession No.	Swiss-Prot#: P62736NCBI Gene ID: 59Gene Accsion: NP_001135417
Uniprot	P62736
GeneID	59;
SDS-PAGE MW	42kd
Concentration	1mg/ml
Formulation	Rabbit IgG in pH7.4 PBS, 0.05% NaN <sub>3</sub> , 40% Glycerol.
Storage	Store at -20°C

## Application Details

Western blotting: 1:1000-1:5000

Immunohistochemistry: 1:25-1:100

## Images



Gel: 8%SDS-PAGE

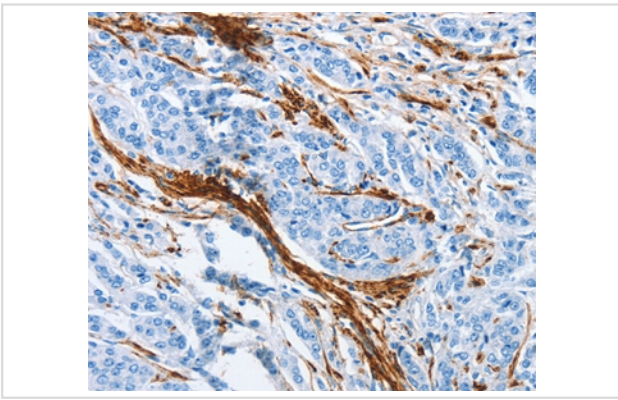
Lysates (from left to right): Mouse heart tissue

Amount of lysate: 40ug per lane

Primary antibody: 1/500 dilution

Secondary antibody dilution: 1/8000

Exposure time: 1 minute



Immunohistochemical analysis of paraffin-embedded Human prostate cancer tissue using #37408 at dilution 1/30.

## Background

The protein encoded by this gene belongs to the actin family of proteins, which are highly conserved proteins that play a role in cell motility, structure and integrity. Alpha, beta and gamma actin isoforms have been identified, with alpha actins being a major constituent of the contractile apparatus, while beta and gamma actins are involved in the regulation of cell motility. This actin is an alpha actin that is found in skeletal muscle. Defects in this gene cause aortic aneurysm familial thoracic type 6. Multiple alternatively spliced variants, encoding the same protein, have been identified.

Note: This product is for in vitro research use only