

ALOX15 Antibody

Catalog No: #37409

Orders: order@signalwayantibody.comSupport: tech@signalwayantibody.com

Description

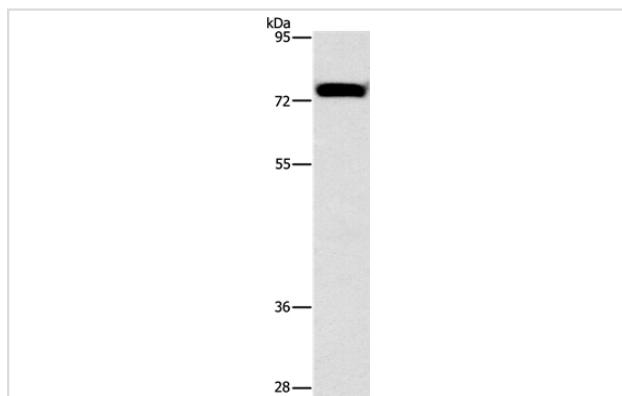
Product Name	ALOX15 Antibody
Host Species	Rabbit
Clonality	Polyclonal
Purification	Antigen affinity purification.
Applications	WB IHC
Species Reactivity	Hu
Specificity	The antibody detects endogenous levels of total ALOX15 protein.
Immunogen Type	Peptide
Immunogen Description	Synthetic peptide corresponding to residues near the C terminal of human arachidonate 15-lipoxygenase
Target Name	ALOX15
Other Names	15-lipoxygenase-1; 15-LOX; 15-LOX-1; 15LOX-1; ALOX15;
Accession No.	Swiss-Prot#: P16050NCBI Gene ID: 246Gene Accssion: NP_001127349
Uniprot	P16050
GeneID	246
SDS-PAGE MW	75kd
Concentration	1mg/ml
Formulation	Rabbit IgG in pH7.4 PBS, 0.05% NaN ₃ , 40% Glycerol.
Storage	Store at -20°C

Application Details

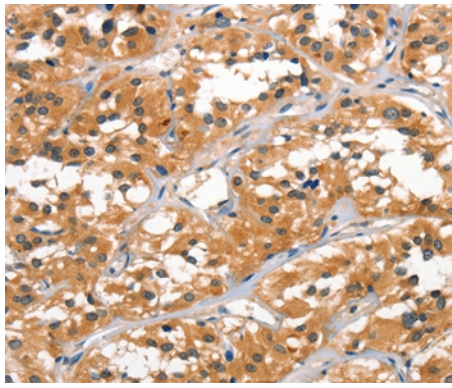
Western blotting: 1:1000-1:5000

Immunohistochemistry: 1:50-1:200

Images



Gel: 10%SDS-PAGE
Lysate: 40ug Hela cell
Primary antibody: 1/1300 dilution
Secondary antibody dilution: 1/8000
Exposure time: 1 minute



Immunohistochemical analysis of paraffin-embedded Human thyroid cancer tissue using #37409 at dilution 1/60.

Background

Arachidonate 15-lipoxygenase is an enzyme that in humans is encoded by the ALOX15 gene. The ALOX15 gene maps to 17p13.3 in close proximity to the tumor-suppressor gene TP53. The ALOX15 gene product is implicated in antiinflammation, membrane remodeling, and cancer development/metastasis. Converts arachidonic acid to 15S-hydroperoxyeicosatetraenoic acid. Also acts on C-12 of arachidonate as well as on linoleic acid.

Note: This product is for in vitro research use only