

STAT2 Antibody

Catalog No: #37417

Orders: order@signalwayantibody.comSupport: tech@signalwayantibody.com

Description

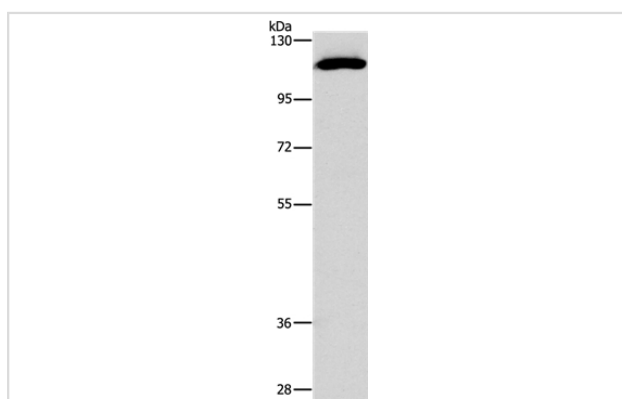
Product Name	STAT2 Antibody
Host Species	Rabbit
Clonality	Polyclonal
Purification	Antigen affinity purification.
Applications	WB IHC
Species Reactivity	Hu
Specificity	The antibody detects endogenous levels of total STAT2 protein.
Immunogen Type	Peptide
Immunogen Description	Synthetic peptide corresponding to a region derived from internal residues of human signal transducer and activator of transcription 2, 113kDa
Target Name	STAT2
Other Names	P113; ISGF-3; STAT113
Accession No.	Swiss-Prot#: P52630NCBI Gene ID: 6773Gene Accssion: NP_005410
Uniprot	P52630
GeneID	6773;
SDS-PAGE MW	98kd
Concentration	3.8mg/ml
Formulation	Rabbit IgG in pH7.4 PBS, 0.05% NaN ₃ , 40% Glycerol.
Storage	Store at -20°C

Application Details

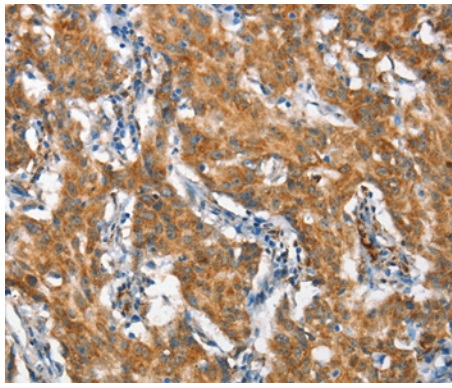
Western blotting: 1:500-1:2000

Immunohistochemistry: 1:50-1:200

Images



Gel: 6%SDS-PAGE
 Lysate: 40ug PC3 cell
 Primary antibody: 1/800 dilution
 Secondary antibody dilution: 1/8000
 Exposure time: 1 minute



Immunohistochemical analysis of paraffin-embedded Human gastric cancer tissue using #37417 at dilution 1/60.

Background

The protein encoded by this gene is a member of the STAT protein family. In response to cytokines and growth factors, STAT family members are phosphorylated by the receptor associated kinases, and then form homo- or heterodimers that translocate to the cell nucleus where they act as transcription activators. In response to interferon (IFN), this protein forms a complex with STAT1 and IFN regulatory factor family protein p48 (ISGF3G), in which this protein acts as a transactivator, but lacks the ability to bind DNA directly. Transcription adaptor P300/CBP (EP300/CREBBP) has been shown to interact specifically with this protein, which is thought to be involved in the process of blocking IFN-alpha response by adenovirus.

Note: This product is for in vitro research use only