

SMAD9 Antibody

Catalog No: #37419

Orders: order@signalwayantibody.comSupport: tech@signalwayantibody.com

Description

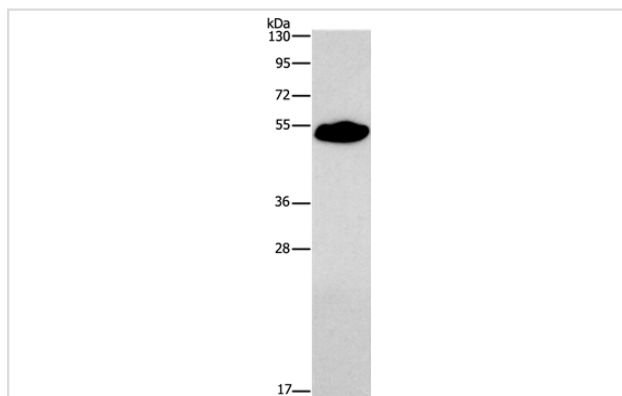
Product Name	SMAD9 Antibody
Host Species	Rabbit
Clonality	Polyclonal
Purification	Antigen affinity purification.
Applications	WB IHC
Species Reactivity	Hu Ms
Specificity	The antibody detects endogenous levels of total SMAD9 protein.
Immunogen Type	Peptide
Immunogen Description	Synthetic peptide corresponding to a region derived from internal residues of human SMAD family member 9
Target Name	SMAD9
Other Names	PPH2; MADH6; MADH9; SMAD8; SMAD8A; SMAD8B
Accession No.	Swiss-Prot#: O15198 NCBI Gene ID: 4093 Gene Accession: NP_001120689
Uniprot	O15198
GeneID	4093;
SDS-PAGE MW	52kd
Concentration	2.9mg/ml
Formulation	Rabbit IgG in pH7.4 PBS, 0.05% NaN ₃ , 40% Glycerol.
Storage	Store at -20°C

Application Details

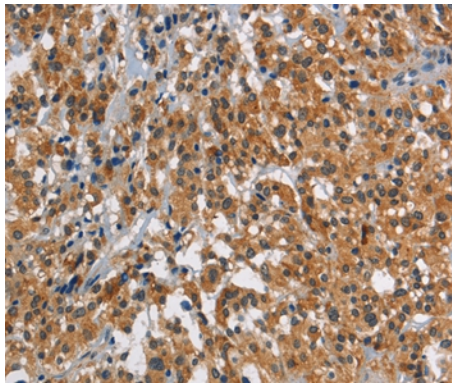
Western blotting: 1:200-1:1000

Immunohistochemistry: 1:25-1:100

Images



Gel: 8%SDS-PAGE
Lysates (from left to right): Mouse heart tissue
Amount of lysate: 40ug per lane
Primary antibody: 1/290 dilution
Secondary antibody dilution: 1/8000
Exposure time: 3 minutes



Immunohistochemical analysis of paraffin-embedded Human thyroid cancer tissue using #37419 at dilution 1/30.

Background

The protein encoded by this gene is a member of the SMAD family, which transduces signals from TGF-beta family members. The encoded protein is activated by bone morphogenetic proteins and interacts with SMAD4. Two transcript variants encoding different isoforms have been found for this gene.

Note: This product is for in vitro research use only