

BNIP3L Antibody

Catalog No: #37422

Orders: order@signalwayantibody.comSupport: tech@signalwayantibody.com

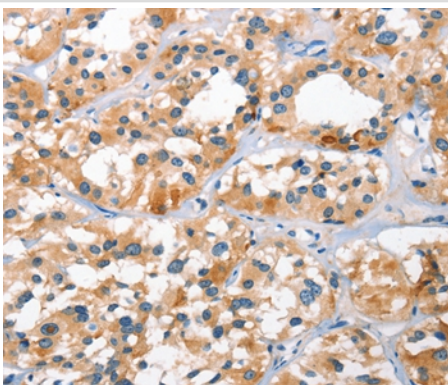
Description

Product Name	BNIP3L Antibody
Host Species	Rabbit
Clonality	Polyclonal
Purification	Antigen affinity purification.
Applications	IHC
Species Reactivity	Hu Ms
Specificity	The antibody detects endogenous levels of total BNIP3L protein.
Immunogen Type	Peptide
Immunogen Description	Synthetic peptide corresponding to a region derived from internal residues of human BCL2/adenovirus E1B 19kDa interacting protein 3-like
Target Name	BNIP3L
Other Names	NIX; BNIP3a
Accession No.	Swiss-Prot#: O60238NCBI Gene ID: 665Gene Accssion: NP_004322
Uniprot	O60238
GeneID	665;
Concentration	1.6mg/ml
Formulation	Rabbit IgG in pH7.4 PBS, 0.05% NaN ₃ , 40% Glycerol.
Storage	Store at -20°C

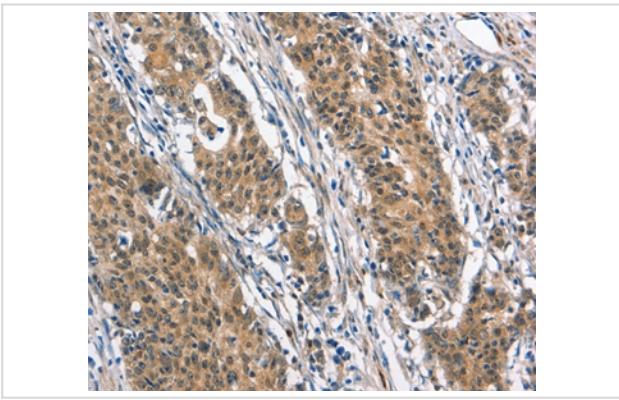
Application Details

Immunohistochemistry: 1:50-1:200

Images



Immunohistochemical analysis of paraffin-embedded Human thyroid cancer tissue using #37422 at dilution 1/40.



Immunohistochemical analysis of paraffin-embedded Human gastric cancer tissue using #37422 at dilution 1/40.

Background

This gene is a member of the BCL2/adenovirus E1B 19 kd-interacting protein (BNIP) family. It interacts with the E1B 19 kDa protein, which protects cells from virally-induced cell death. The encoded protein also interacts with E1B 19 kDa-like sequences of BCL2, another apoptotic protector. This protein counteracts the apoptotic inducer BNIP3 and may play a role in tumor suppression.

Note: This product is for in vitro research use only