

GPR182 Antibody

Catalog No: #37423

Orders: order@signalwayantibody.comSupport: tech@signalwayantibody.com

Description

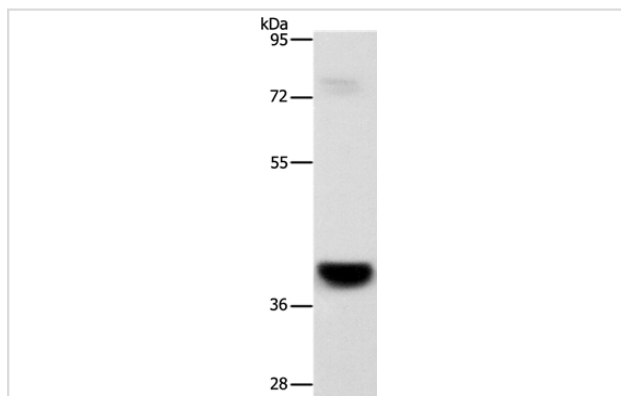
Product Name	GPR182 Antibody
Host Species	Rabbit
Clonality	Polyclonal
Purification	Antigen affinity purification.
Applications	WB IHC
Species Reactivity	Hu Ms
Specificity	The antibody detects endogenous levels of total GPR182 protein.
Immunogen Type	Peptide
Immunogen Description	Synthetic peptide corresponding to residues near the N terminal of human G protein-coupled receptor 182
Target Name	GPR182
Other Names	AMR; 7TMR; ADMR; AM-R; G10D; gamrh; hrhAMR
Accession No.	Swiss-Prot#: O15218NCBI Gene ID: 11318Gene Accssion: NP_009195
Uniprot	O15218
GeneID	11318;
SDS-PAGE MW	45kd
Concentration	2.4mg/ml
Formulation	Rabbit IgG in pH7.4 PBS, 0.05% NaN ₃ , 40% Glycerol.
Storage	Store at -20°C

Application Details

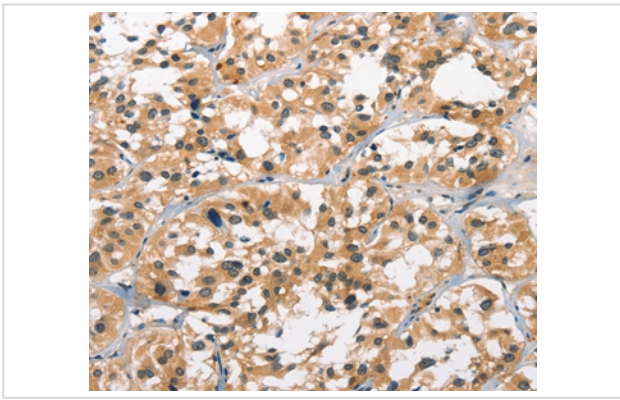
Western blotting: 1:200-1:1000

Immunohistochemistry: 1:25-1:100

Images



Gel: 8%SDS-PAGE
 Lysates (from left to right): Mouse liver tissue
 Amount of lysate: 40ug per lane
 Primary antibody: 1/1000 dilution
 Secondary antibody dilution: 1/8000
 Exposure time: 8 minutes



Immunohistochemical analysis of paraffin-embedded Human thyroid cancer tissue using #37423 at dilution 1/30.

Background

Adrenomedullin is a potent vasodilator peptide that exerts major effects on cardiovascular function. This gene encodes a seven-transmembrane protein that belongs to the family 1 of G-protein coupled receptors. Studies of the rat counterpart suggest that the encoded protein may function as a receptor for adrenomedullin.

Note: This product is for in vitro research use only