

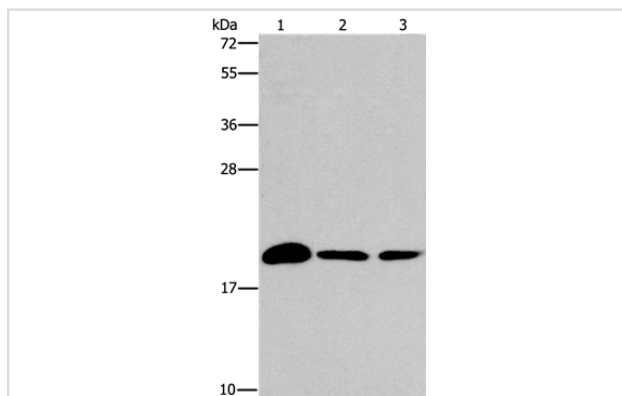
Description

Product Name	ARL3 Antibody
Host Species	Rabbit
Clonality	Polyclonal
Purification	Antigen affinity purification.
Applications	WB
Species Reactivity	Hu Ms Rt
Specificity	The antibody detects endogenous levels of total ARL3 protein.
Immunogen Type	Peptide
Immunogen Description	Synthetic peptide corresponding to a region derived from internal residues of human ADP-ribosylation factor-like 3
Target Name	ARL3
Other Names	ARFL3
Accession No.	Swiss-Prot#: P36405NCBI Gene ID: 403Gene Accssion: NP_004302
Uniprot	P36405
GeneID	403;
SDS-PAGE MW	20kd
Concentration	1.3mg/ml
Formulation	Rabbit IgG in pH7.4 PBS, 0.05% NaN ₃ , 40% Glycerol.
Storage	Store at -20°C

Application Details

Western blotting: 1:200-1:1000

Images



Gel: 15%SDS-PAGE

Lysates (from left to right): Mouse brain tissue and 231 cell, A375 cell

Amount of lysate: 40ug per lane

Primary antibody: 1/433 dilution

Secondary antibody dilution: 1/8000

Exposure time: 2 minutes

Background

ADP-ribosylation factor-like 3 is a member of the ADP-ribosylation factor family of GTP-binding proteins. ARL3 binds guanine nucleotides but lacks

ADP-ribosylation factor activity. Small GTP-binding protein which cycles between an inactive GDP-bound and an active GTP-bound form, and the rate of cycling is regulated by guanine nucleotide exchange factors (GEF) and GTPase-activating proteins (GAP). Required for normal cytokinesis and cilia signaling. Requires assistance from GTPase-activating proteins (GAPs) like RP2 and PDE6D, in order to cycle between inactive GDP-bound and active GTP-bound forms.

Note: This product is for in vitro research use only