

## ERAP1 Antibody

Catalog No: #37429

Orders: order@signalwayantibody.com

Support: tech@signalwayantibody.com

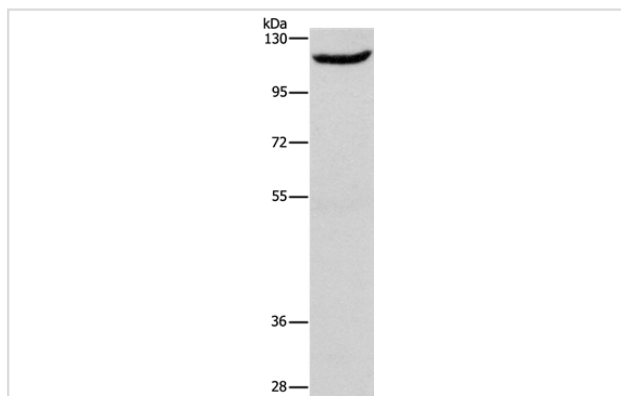
## Description

|                       |  |
|-----------------------|--|
| Product Name          | ERAP1 Antibody   |
| Host Species          | Rabbit   |
| Clonality             | Polyclonal   |
| Purification          | Antigen affinity purification.   |
| Applications          | WB   |
| Species Reactivity    | Hu   |
| Specificity           | The antibody detects endogenous levels of total ERAP1 protein.   |
| Immunogen Type        | Peptide  |
| Immunogen Description | Synthetic peptide corresponding to a region derived from internal residues of human endoplasmic reticulum aminopeptidase 1 |
| Target Name           | ERAP1  |
| Other Names           | ALAP; A-LAP; ARTS1; ERAAP; APPILS; ARTS-1; ERAAP1; PILSAP; PILS-AP   |
| Accession No.         | Swiss-Prot#: Q9NZ08NCBI Gene ID: 51752Gene Accssion: NP_001035548  |
| Uniprot               | Q9NZ08   |
| GeneID                | 51752;   |
| SDS-PAGE MW           | 107kd  |
| Concentration         | 1.4mg/ml   |
| Formulation           | Rabbit IgG in pH7.4 PBS, 0.05% NaN <sub>3</sub> , 40% Glycerol.  |
| Storage               | Store at -20°C   |

## Application Details

Western blotting: 1:200-1:1000

## Images



Gel: 6%SDS-PAGE  
 Lysate: 40ug Raji cell  
 Primary antibody: 1/466 dilution  
 Secondary antibody dilution: 1/8000  
 Exposure time: 10 minutes

## Background

The protein encoded by this gene is an aminopeptidase involved in trimming HLA class I-binding precursors so that they can be presented on MHC

class I molecules. The encoded protein acts as a monomer or as a heterodimer with ERAP2. This protein may also be involved in blood pressure regulation by inactivation of angiotensin II. Three transcript variants encoding two different isoforms have been found for this gene.

---

Note: This product is for in vitro research use only