

ASIC1 Antibody

Catalog No: #37430

Orders: order@signalwayantibody.comSupport: tech@signalwayantibody.com

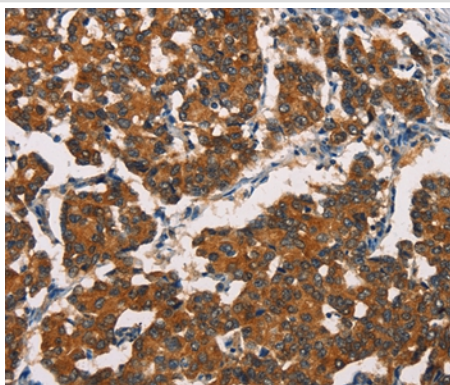
Description

Product Name	ASIC1 Antibody
Host Species	Rabbit
Clonality	Polyclonal
Purification	Antigen affinity purification.
Applications	IHC
Species Reactivity	Hu
Specificity	The antibody detects endogenous levels of total ASIC1 protein.
Immunogen Type	Peptide
Immunogen Description	Synthetic peptide corresponding to a region derived from internal residues of human acid-sensing (proton-gated) ion channel 1
Target Name	ASIC1
Other Names	ASIC; ACCN2; BNaC2
Accession No.	Swiss-Prot#: P78348NCBI Gene ID: 41Gene Accsion: NP_001086
Uniprot	P78348
GeneID	41;
Concentration	1.3mg/ml
Formulation	Rabbit IgG in pH7.4 PBS, 0.05% NaN ₃ , 40% Glycerol.
Storage	Store at -20°C

Application Details

Immunohistochemistry: 1:25-1:100

Images



Immunohistochemical analysis of paraffin-embedded Human breast cancer tissue using #37430 at dilution 1/20.

Background

This gene encodes a member of the acid-sensing ion channel (ASIC) family of proteins, which are part of the degenerin/epithelial sodium channel (DEG/ENaC) superfamily. Members of the ASIC family are sensitive to amiloride and function in neurotransmission. The encoded proteins function in

learning, pain transduction, touch sensation, and development of memory and fear. Alternatively spliced transcript variants have been described.

Note: This product is for in vitro research use only