

ATP7A Antibody

Catalog No: #37432

Orders: order@signalwayantibody.com

Support: tech@signalwayantibody.com

Description

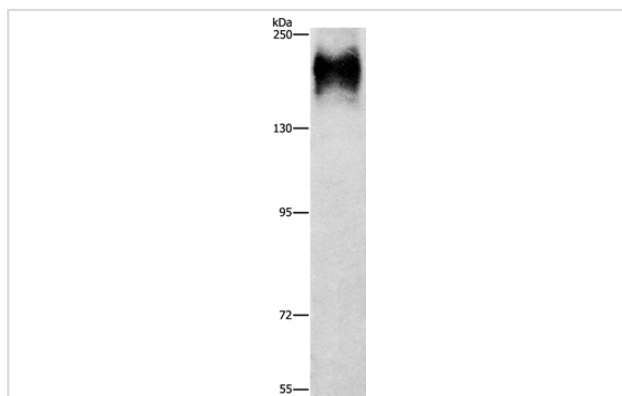
Product Name	ATP7A Antibody
Host Species	Rabbit
Clonality	Polyclonal
Purification	Antigen affinity purification.
Applications	WB IHC
Species Reactivity	Hu
Specificity	The antibody detects endogenous levels of total ATP7A protein.
Immunogen Type	Peptide
Immunogen Description	Synthetic peptide corresponding to residues near the C terminal of human ATPase, Cu ⁺⁺ transporting, alpha polypeptide
Target Name	ATP7A
Other Names	MK; MNK; DSMAX; SMAX3
Accession No.	Swiss-Prot#: Q04656NCBI Gene ID: 538Gene Accssion: NP_000043
Uniprot	Q04656
GeneID	538;
SDS-PAGE MW	163kd
Concentration	4mg/ml
Formulation	Rabbit IgG in pH7.4 PBS, 0.05% NaN ₃ , 40% Glycerol.
Storage	Store at -20°C

Application Details

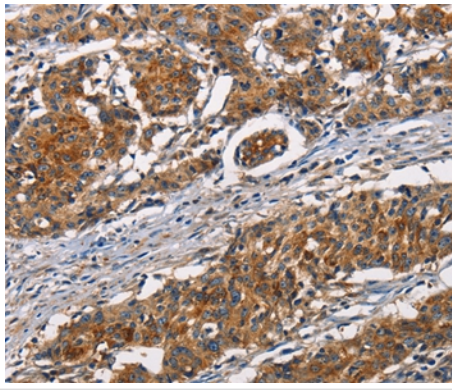
Western blotting: 1:200-1:1000

Immunohistochemistry: 1:50-1:200

Images



Gel: 6%SDS-PAGE
Lysate: 40ug HepG2 cell
Primary antibody: 1/800 dilution
Secondary antibody dilution: 1/8000
Exposure time: 10 minutes



Immunohistochemical analysis of paraffin-embedded Human gastric cancer tissue using #37432 at dilution 1/50.

Background

This gene encodes a transmembrane protein that functions in copper transport across membranes. This protein is localized to the trans Golgi network, where it is predicted to supply copper to copper-dependent enzymes in the secretory pathway. It relocalizes to the plasma membrane under conditions of elevated extracellular copper, and functions in the efflux of copper from cells. Mutations in this gene are associated with Menkes disease, X-linked distal spinal muscular atrophy, and occipital horn syndrome. Alternatively-spliced transcript variants have been observed.?

Note: This product is for in vitro research use only