

## CD80 Antibody

Catalog No: #37436

Orders: [order@signalwayantibody.com](mailto:order@signalwayantibody.com)Support: [tech@signalwayantibody.com](mailto:tech@signalwayantibody.com)

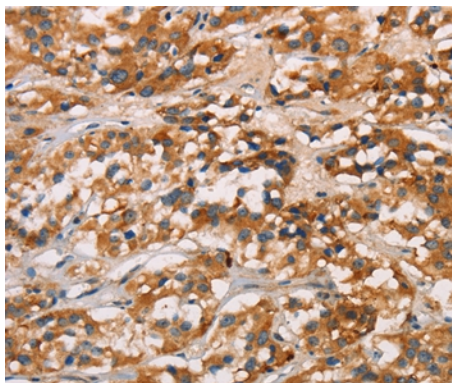
## Description

Product Name	CD80 Antibody
Host Species	Rabbit
Clonality	Polyclonal
Purification	Antigen affinity purification.
Applications	IHC
Species Reactivity	Hu
Specificity	The antibody detects endogenous levels of total CD80 protein.
Immunogen Type	Peptide
Immunogen Description	Synthetic peptide corresponding to a region derived from internal residues of human CD80 molecule
Target Name	CD80
Other Names	B7; BB1; B7-1; B7.1; LAB7; CD28LG; CD28LG1
Accession No.	Swiss-Prot#: P33681NCBI Gene ID: 941Gene Accssion: NP_005182
Uniprot	P33681
GeneID	941;
Concentration	3.5mg/ml
Formulation	Rabbit IgG in pH7.4 PBS, 0.05% NaN <sub>3</sub> , 40% Glycerol.
Storage	Store at -20°C

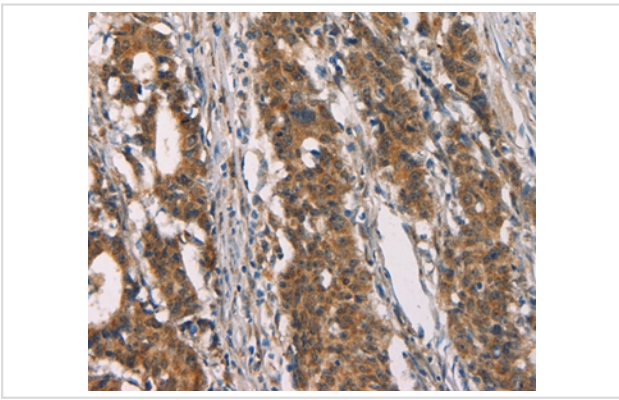
## Application Details

Immunohistochemistry: 1:50-1:200

## Images



Immunohistochemical analysis of paraffin-embedded Human thyroid cancer tissue using #37436 at dilution 1/50.



Immunohistochemical analysis of paraffin-embedded Human gastric cancer tissue using #37436 at dilution 1/50.

## Background

The protein encoded by this gene is a membrane receptor that is activated by the binding of CD28 or CTLA-4. The activated protein induces T-cell proliferation and cytokine production. This protein can act as a receptor for adenovirus subgroup B and may play a role in lupus neuropathy.

Note: This product is for in vitro research use only