

CACNA1E Antibody

Catalog No: #37453

Orders: order@signalwayantibody.comSupport: tech@signalwayantibody.com

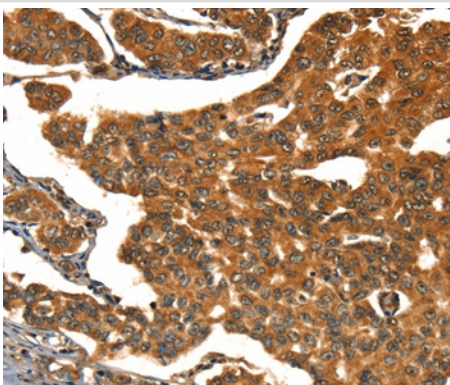
Description

Product Name	CACNA1E Antibody
Host Species	Rabbit
Clonality	Polyclonal
Purification	Antigen affinity purification.
Applications	IHC
Species Reactivity	Hu
Specificity	The antibody detects endogenous levels of total CACNA1E protein.
Immunogen Type	Peptide
Immunogen Description	Synthetic peptide corresponding to a region derived from internal residues of human calcium channel, voltage-dependent, R type, alpha 1E subunit
Target Name	CACNA1E
Other Names	BII; CACH6; Cav2.3; CACNL1A6
Accession No.	Swiss-Prot#: Q15878NCBI Gene ID: 777Gene Accssion: NP_001192222
Uniprot	Q15878
GeneID	777;
Concentration	1.2mg/ml
Formulation	Rabbit IgG in pH7.4 PBS, 0.05% NaN ₃ , 40% Glycerol.
Storage	Store at -20°C

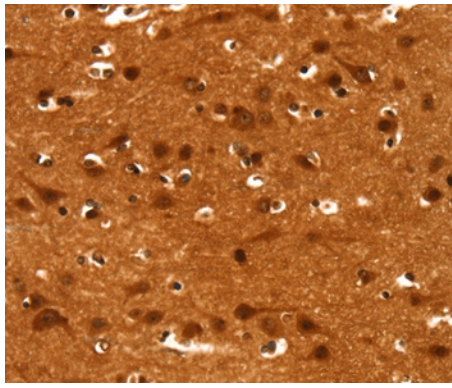
Application Details

Immunohistochemistry: 1:25-1:100

Images



Immunohistochemical analysis of paraffin-embedded Human breast cancer tissue using #37453 at dilution 1/15.



Immunohistochemical analysis of paraffin-embedded Human brain tissue using #37453 at dilution 1/15.

Background

Voltage-dependent calcium channels are multisubunit complexes consisting of alpha-1, alpha-2, beta, and delta subunits in a 1:1:1:1 ratio. These channels mediate the entry of calcium ions into excitable cells, and are also involved in a variety of calcium-dependent processes, including muscle contraction, hormone or neurotransmitter release, gene expression, cell motility, cell division and cell death. This gene encodes the alpha-1E subunit of the R-type calcium channels, which belong to the 'high-voltage activated' group that maybe involved in the modulation of firing patterns of neurons important for information processing. Alternatively spliced transcript variants encoding different isoforms have been described for this gene

Note: This product is for in vitro research use only