

CARD17 Antibody

Catalog No: #37461

Orders: order@signalwayantibody.comSupport: tech@signalwayantibody.com

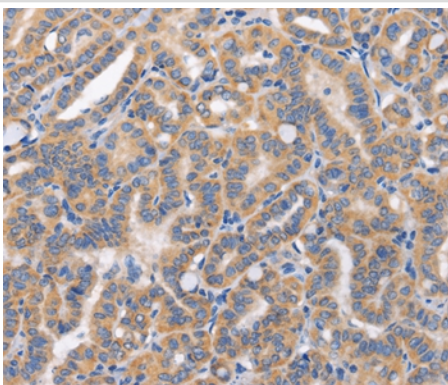
Description

Product Name	CARD17 Antibody
Host Species	Rabbit
Clonality	Polyclonal
Purification	Antigen affinity purification.
Applications	IHC
Species Reactivity	Hu
Specificity	The antibody detects endogenous levels of total CARD17 protein.
Immunogen Type	Peptide
Immunogen Description	Synthetic peptide corresponding to residues near the C terminal of human caspase recruitment domain family, member 17
Target Name	CARD17
Other Names	INCA
Accession No.	Swiss-Prot#: Q5XLA6NCBI Gene ID: 440068Gene Accssion: NP_001007233
Uniprot	Q5XLA6
GeneID	440068;
Concentration	3mg/ml
Formulation	Rabbit IgG in pH7.4 PBS, 0.05% NaN ₃ , 40% Glycerol.
Storage	Store at -20°C

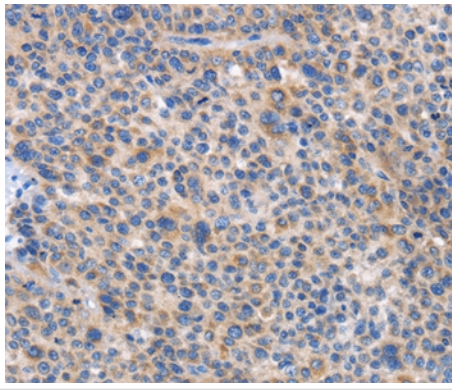
Application Details

Immunohistochemistry: 1:50-1:200

Images



Immunohistochemical analysis of paraffin-embedded Human thyroid cancer tissue using #37461 at dilution 1/50.



Immunohistochemical analysis of paraffin-embedded Human liver cancer tissue using #37461 at dilution 1/50.

Background

Regulator of procaspase-1/CASP1 activation implicated in the regulation of the proteolytic maturation of pro-IL-1beta/IL1B and its release during inflammation. Inhibits the release of IL1B in response to LPS in monocytes. However, unlike CASP1, do not induce NF-kappa-B activation.

Note: This product is for in vitro research use only