

CCL16 Antibody

Catalog No: #37464

Orders: order@signalwayantibody.comSupport: tech@signalwayantibody.com

Description

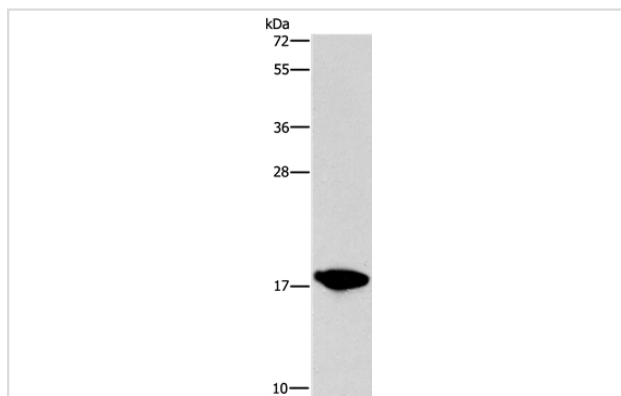
Product Name	CCL16 Antibody
Host Species	Rabbit
Clonality	Polyclonal
Purification	Antigen affinity purification.
Applications	WB IHC
Species Reactivity	Hu
Specificity	The antibody detects endogenous levels of total CCL16 protein.
Immunogen Type	Peptide
Immunogen Description	Synthetic peptide corresponding to residues near the C terminal of human chemokine (C-C motif) ligand 16
Target Name	CCL16
Other Names	LEC; LMC; NCC4; CKb12; HCC-4; LCC-1; Mtn-1; NCC-4; SCYL4; ILINCK; SCYA16
Accession No.	Swiss-Prot#: O15467NCBI Gene ID: 6360Gene Accssion: NP_004581
Uniprot	O15467
GeneID	6360;
SDS-PAGE MW	14kd
Concentration	2.3mg/ml
Formulation	Rabbit IgG in pH7.4 PBS, 0.05% NaN ₃ , 40% Glycerol.
Storage	Store at -20°C

Application Details

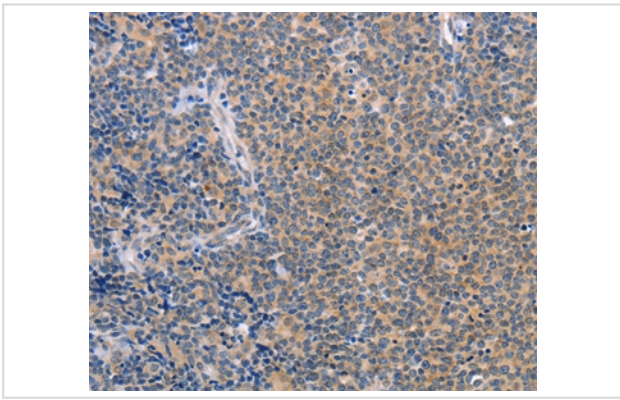
Western blotting: 1:500-1:2000

Immunohistochemistry: 1:50-1:200

Images



Gel: 15%SDS-PAGE
Lysate: 40ug HepG2 cell
Primary antibody: 1/760 dilution
Secondary antibody dilution: 1/8000
Exposure time: 3 seconds



Immunohistochemical analysis of paraffin-embedded Human lymphoma tissue using #37464 at dilution 1/50.

Background

This gene is one of several cytokine genes clustered on the q-arm of chromosome 17. Cytokines are a family of secreted proteins involved in immunoregulatory and inflammatory processes. The CC cytokines are proteins characterized by two adjacent cysteines. The cytokine encoded by this gene displays chemotactic activity for lymphocytes and monocytes but not for neutrophils. This cytokine also shows a potent myelosuppressive activity and suppresses proliferation of myeloid progenitor cells. The expression of this gene is upregulated by IL-10.

Note: This product is for in vitro research use only