

CCR6 Antibody

Catalog No: #37466

Orders: order@signalwayantibody.com

Support: tech@signalwayantibody.com

Description

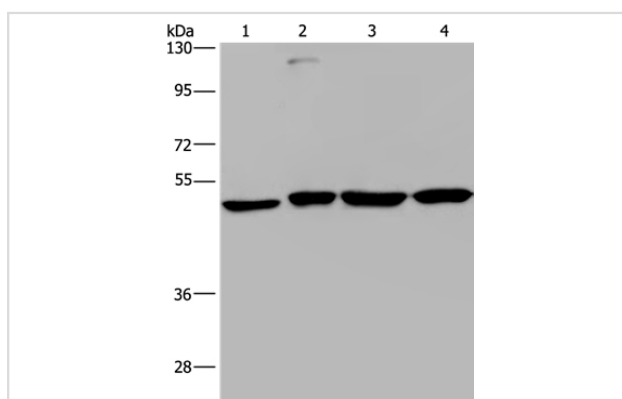
Product Name	CCR6 Antibody
Host Species	Rabbit
Clonality	Polyclonal
Purification	Antigen affinity purification.
Applications	WB IHC
Species Reactivity	Hu
Specificity	The antibody detects endogenous levels of total CCR6 protein.
Immunogen Type	Peptide
Immunogen Description	Synthetic peptide corresponding to residues near the N terminal of human chemokine (C-C motif) receptor 6
Target Name	CCR6
Other Names	BN-1; DCR2; DRY6; CCR-6; CD196; CKRL3; GPR29; CKR-L3; CMKBR6; GPRCY4; STRL22; CC-CKR-6; C-C CKR-6
Accession No.	Swiss-Prot#: P51684NCBI Gene ID: 1235Gene Accssion: NP_004358
Uniprot	P51684
GeneID	1235;
SDS-PAGE MW	42kd
Concentration	2.9mg/ml
Formulation	Rabbit IgG in pH7.4 PBS, 0.05% NaN ₃ , 40% Glycerol.
Storage	Store at -20°C

Application Details

Western blotting: 1:1000-1:5000

Immunohistochemistry: 1:50-1:200

Images



Gel: 8%SDS-PAGE

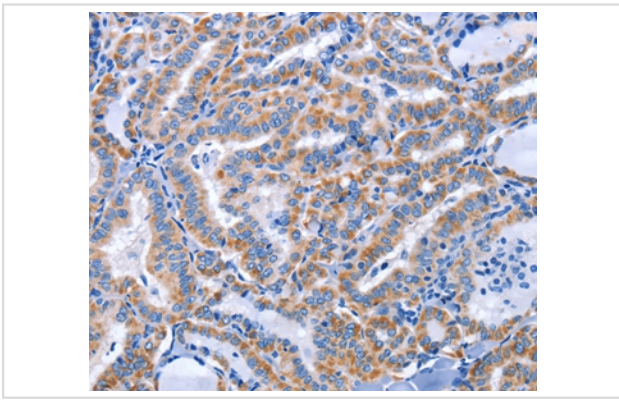
Lysates (from left to right): A431, HepG2, Raji and K562 cell

Amount of lysate: 40ug per lane

Primary antibody: 1/966 dilution

Secondary antibody dilution: 1/8000

Exposure time: 1 minute



Immunohistochemical analysis of paraffin-embedded Human thyroid cancer tissue using #37466 at dilution 1/50.

Background

This gene encodes a member of the beta chemokine receptor family, which is predicted to be a seven transmembrane protein similar to G protein-coupled receptors. The gene is preferentially expressed by immature dendritic cells and memory T cells. The ligand of this receptor is macrophage inflammatory protein 3 alpha (MIP-3 alpha). This receptor has been shown to be important for B-lineage maturation and antigen-driven B-cell differentiation, and it may regulate the migration and recruitment of dendritic and T cells during inflammatory and immunological responses. Alternatively spliced transcript variants that encode the same protein have been described for this gene.

Note: This product is for in vitro research use only