

## CD38 Antibody

Catalog No: #37474

Orders: [order@signalwayantibody.com](mailto:order@signalwayantibody.com)Support: [tech@signalwayantibody.com](mailto:tech@signalwayantibody.com)

## Description

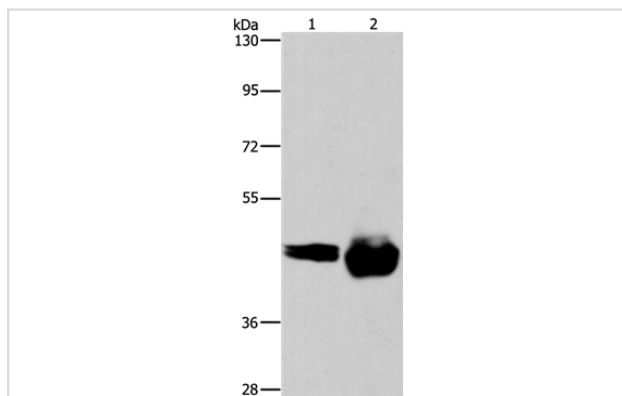
Product Name	CD38 Antibody
Host Species	Rabbit
Clonality	Polyclonal
Purification	Antigen affinity purification.
Applications	WB IHC
Species Reactivity	Hu
Specificity	The antibody detects endogenous levels of total CD38 protein.
Immunogen Type	Peptide
Immunogen Description	Synthetic peptide corresponding to residues near the C terminal of human CD38 molecule
Target Name	CD38
Other Names	T10
Accession No.	Swiss-Prot#: P28907NCBI Gene ID: 952Gene Accssion: NP_001766
Uniprot	P28907
GeneID	952;
SDS-PAGE MW	34kd
Concentration	2.6mg/ml
Formulation	Rabbit IgG in pH7.4 PBS, 0.05% NaN <sub>3</sub> , 40% Glycerol.
Storage	Store at -20°C

## Application Details

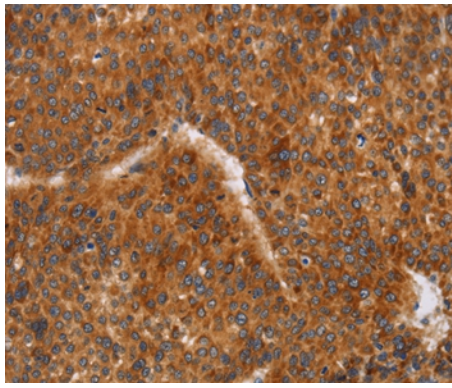
Western blotting: 1:500-1:2000

Immunohistochemistry: 1:50-1:200

## Images



Gel: 6%SDS-PAGE  
 Lysates (from left to right): A549 and Raji cell  
 Amount of lysate: 40ug per lane  
 Primary antibody: 1/520 dilution  
 Secondary antibody dilution: 1/8000  
 Exposure time: 3 minutes



Immunohistochemical analysis of paraffin-embedded Human liver cancer tissue using #37474 at dilution 1/60.

## Background

CD38 is a novel multifunctional ectoenzyme widely expressed in cells and tissues especially in leukocytes. CD38 also functions in cell adhesion, signal transduction and calcium signaling. Synthesizes cyclic ADP-ribose, a second messenger for glucose-induced insulin secretion. Also has cADPr hydrolase activity. Also moonlights as a receptor in cells of the immune system.

Note: This product is for in vitro research use only