

## CD48 Antibody

Catalog No: #37475

Orders: [order@signalwayantibody.com](mailto:order@signalwayantibody.com)Support: [tech@signalwayantibody.com](mailto:tech@signalwayantibody.com)

## Description

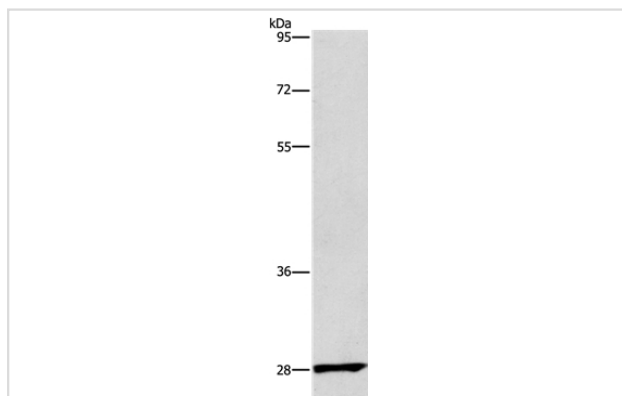
Product Name	CD48 Antibody
Host Species	Rabbit
Clonality	Polyclonal
Purification	Antigen affinity purification.
Applications	WB IHC
Species Reactivity	Hu Ms
Specificity	The antibody detects endogenous levels of total CD48 protein.
Immunogen Type	Peptide
Immunogen Description	Synthetic peptide corresponding to a region derived from internal residues of human CD48 molecule
Target Name	CD48
Other Names	BCM1; BLAST; hCD48; mCD48; BLAST1; SLAMF2; MEM-102
Accession No.	Swiss-Prot#: P09326NCBI Gene ID: 962Gene Accssion: NP_001769
Uniprot	P09326
GeneID	962;
SDS-PAGE MW	28kd
Concentration	2.2mg/ml
Formulation	Rabbit IgG in pH7.4 PBS, 0.05% NaN <sub>3</sub> , 40% Glycerol.
Storage	Store at -20°C

## Application Details

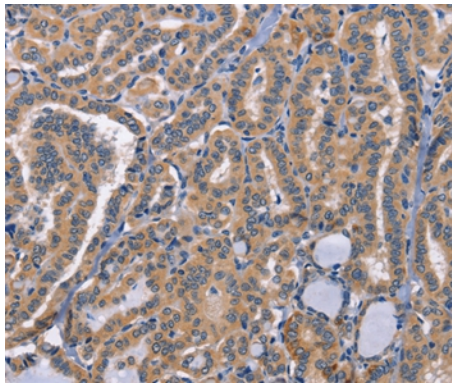
Western blotting: 1:200-1:1000

Immunohistochemistry: 1:50-1:200

## Images



Gel: 12%SDS-PAGE  
Lysate: 40ug Raw264.7 cell  
Primary antibody: 1/550 dilution  
Secondary antibody dilution: 1/8000  
Exposure time: 3 minutes



Immunohistochemical analysis of paraffin-embedded Human thyroid cancer tissue using #37475 at dilution 1/50.

## Background

This gene encodes a member of the CD2 subfamily of immunoglobulin-like receptors which includes SLAM (signaling lymphocyte activation molecules) proteins. The encoded protein is found on the surface of lymphocytes and other immune cells, dendritic cells and endothelial cells, and participates in activation and differentiation pathways in these cells. The encoded protein does not have a transmembrane domain, however, but is held at the cell surface by a GPI anchor via a C-terminal domain which maybe cleaved to yield a soluble form of the receptor. Multiple transcript variants encoding different isoforms have been found for this gene.

Note: This product is for in vitro research use only