

## NCAM1 Antibody

Catalog No: #37476

Orders: [order@signalwayantibody.com](mailto:order@signalwayantibody.com)Support: [tech@signalwayantibody.com](mailto:tech@signalwayantibody.com)

## Description

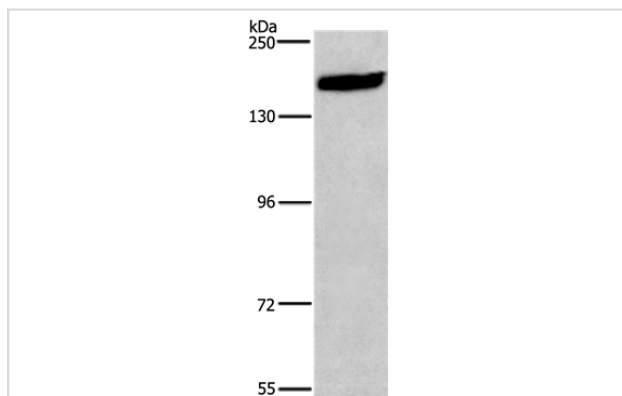
Product Name	NCAM1 Antibody
Host Species	Rabbit
Clonality	Polyclonal
Purification	Antigen affinity purification.
Applications	WB IHC
Species Reactivity	Hu Ms
Specificity	The antibody detects endogenous levels of total NCAM1 protein.
Immunogen Type	Peptide
Immunogen Description	Synthetic peptide corresponding to residues near the C terminal of human neural cell adhesion molecule 1
Target Name	NCAM1
Other Names	CD56; NCAM; MSK39
Accession No.	Swiss-Prot#: P13591NCBI Gene ID: 4684Gene Accssion: NP_000606
Uniprot	P13591
GeneID	4684;
SDS-PAGE MW	95kd
Concentration	2.1mg/ml
Formulation	Rabbit IgG in pH7.4 PBS, 0.05% NaN <sub>3</sub> , 40% Glycerol.
Storage	Store at -20°C

## Application Details

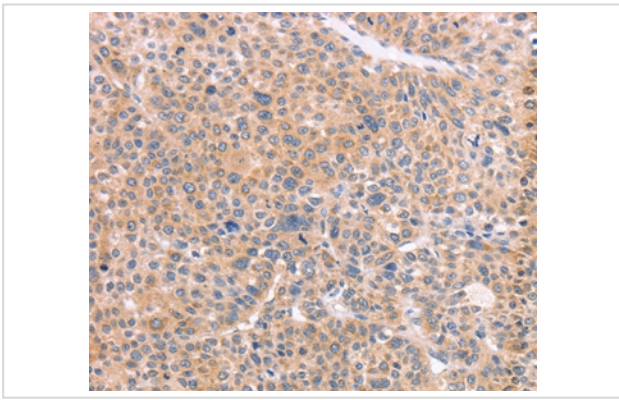
Western blotting: 1:500-1:2000

Immunohistochemistry: 1:50-1:200

## Images



Gel: 6%SDS-PAGE  
Lysate: 40ug 293T cell  
Primary antibody: 1/400 dilution  
Secondary antibody dilution: 1/8000  
Exposure time: 40 seconds



Immunohistochemical analysis of paraffin-embedded Human liver cancer tissue using #37476 at dilution 1/50.

## Background

This gene encodes a cell adhesion protein which is a member of the immunoglobulin superfamily. The encoded protein is involved in cell-to-cell interactions as well as cell-matrix interactions during development and differentiation. The encoded protein has been shown to be involved in development of the nervous system, and for cells involved in the expansion of T cells and dendritic cells which play an important role in immune surveillance. Alternative splicing results in multiple transcript variants.

Note: This product is for in vitro research use only