

CENPE Antibody

Catalog No: #37482

Orders: order@signalwayantibody.comSupport: tech@signalwayantibody.com

Description

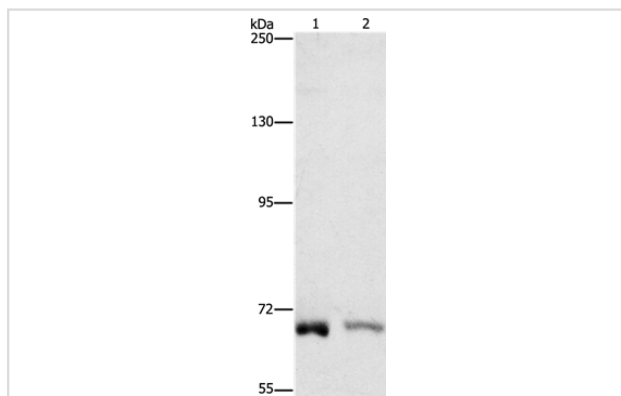
Product Name	CENPE Antibody
Host Species	Rabbit
Clonality	Polyclonal
Purification	Antigen affinity purification.
Applications	WB IHC
Species Reactivity	Hu
Specificity	The antibody detects endogenous levels of total CENPE protein.
Immunogen Type	Peptide
Immunogen Description	Synthetic peptide corresponding to residues near the N terminal of human centromere protein E, 312kDa
Target Name	CENPE
Other Names	KIF10; CENP-E; PPP1R61
Accession No.	Swiss-Prot#: Q02224NCBI Gene ID: 1062Gene Accssion: NP_001804
Uniprot	Q02224
GeneID	1062;
SDS-PAGE MW	316kd
Concentration	2.8mg/ml
Formulation	Rabbit IgG in pH7.4 PBS, 0.05% NaN ₃ , 40% Glycerol.
Storage	Store at -20°C

Application Details

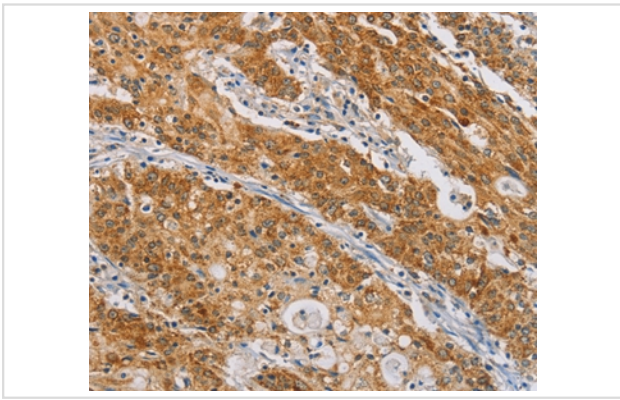
Western blotting: 1:500-1:2000

Immunohistochemistry: 1:50-1:200

Images



Gel: 6%SDS-PAGE
 Lysates (from left to right): K562 and A431 cell
 Amount of lysate: 40ug per lane
 Primary antibody: 1/1400 dilution
 Secondary antibody dilution: 1/8000
 Exposure time: 1 minute



Immunohistochemical analysis of paraffin-embedded Human gastric cancer tissue using #37482 at dilution 1/50.

Background

Centrosome-associated protein E is a kinesin-like motor protein that accumulates in the G2 phase of the cell cycle. Unlike other centrosome-associated proteins, it is not present during interphase and first appears at the centromere region of chromosomes during prometaphase. CENPE is proposed to be one of the motors responsible for mammalian chromosome movement and/or spindle elongation.?

Note: This product is for in vitro research use only