

## CERKL Antibody

Catalog No: #37485

Orders: [order@signalwayantibody.com](mailto:order@signalwayantibody.com)Support: [tech@signalwayantibody.com](mailto:tech@signalwayantibody.com)

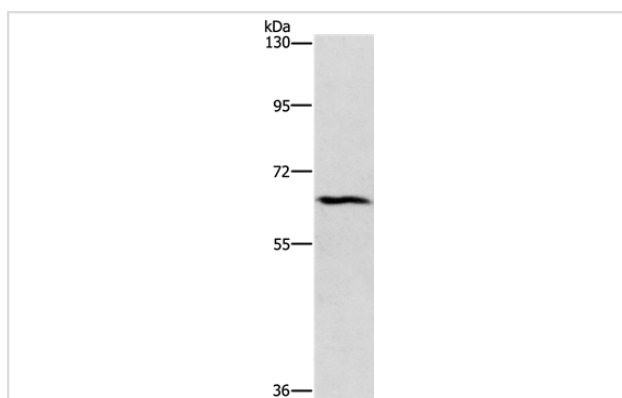
## Description

Product Name	CERKL Antibody
Host Species	Rabbit
Clonality	Polyclonal
Purification	Antigen affinity purification.
Applications	WB
Species Reactivity	Hu
Specificity	The antibody detects endogenous levels of total CERKL protein.
Immunogen Type	Peptide
Immunogen Description	Synthetic peptide corresponding to a region derived from internal residues of human ceramide kinase-like
Target Name	CERKL
Other Names	RP26
Accession No.	Swiss-Prot#: Q49MI3NCBI Gene ID: 375298Gene Accssion: NP_001025482
Uniprot	Q49MI3
GeneID	375298;
SDS-PAGE MW	63kd
Concentration	2.2mg/ml
Formulation	Rabbit IgG in pH7.4 PBS, 0.05% NaN <sub>3</sub> , 40% Glycerol.
Storage	Store at -20°C

## Application Details

Western blotting: 1:500-1:2000

## Images



Gel: 6%SDS-PAGE  
 Lysate: 40ug Hela cell  
 Primary antibody: 1/1100 dilution  
 Secondary antibody dilution: 1/8000  
 Exposure time: 1 minute

## Background

This gene encodes a protein with ceramide kinase-like domains, however, the protein does not phosphorylate ceramide and its target substrate is currently unknown. This protein may be a negative regulator of apoptosis in photoreceptor cells. Mutations in this gene cause a form of retinitis

pigmentosa characterized by autosomal recessive cone and rod dystrophy (arCRD).?

---

Note: This product is for in vitro research use only