

TSPYL2 Antibody

Catalog No: #37489

Orders: order@signalwayantibody.comSupport: tech@signalwayantibody.com

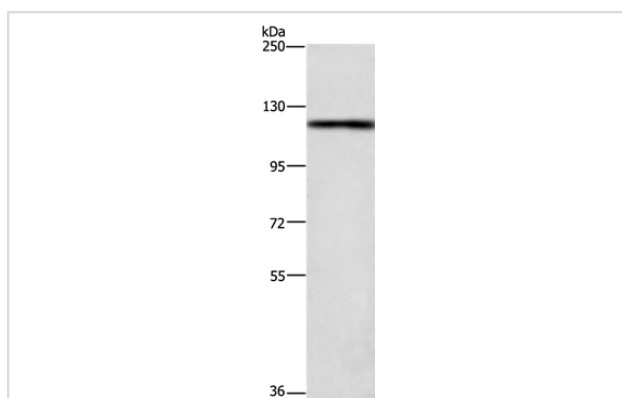
Description

Product Name	TSPYL2 Antibody
Host Species	Rabbit
Clonality	Polyclonal
Purification	Antigen affinity purification.
Applications	WB
Species Reactivity	Hu
Specificity	The antibody detects endogenous levels of total TSPYL2 protein.
Immunogen Type	Peptide
Immunogen Description	Synthetic peptide corresponding to a region derived from internal residues of human TSPY-like 2
Target Name	TSPYL2
Other Names	CDA1; CTCL; NP79; TSPX; CINAP; DENTT; SE204; HRIHFB2216
Accession No.	Swiss-Prot#: Q9H2G4NCBI Gene ID: 64061Gene Accsion: NP_071400
Uniprot	Q9H2G4
GeneID	64061;
SDS-PAGE MW	79kd
Concentration	1.6mg/ml
Formulation	Rabbit IgG in pH7.4 PBS, 0.05% NaN ₃ , 40% Glycerol.
Storage	Store at -20°C

Application Details

Western blotting: 1:500-1:2000

Images



Gel: 6%SDS-PAGE
 Lysate: 40ug 231 cell
 Primary antibody: 1/400 dilution
 Secondary antibody dilution: 1/8000
 Exposure time: 1 minute

Background

This gene encodes a member of the testis-specific protein Y-encoded, TSPY-like/SET/nucleosome assembly protein-1 superfamily. The encoded protein is localized to the nucleolus where it functions in chromatin remodeling and as an inhibitor of cell-cycle progression. This protein may play a

role in the suppression of tumor growth.

Note: This product is for in vitro research use only