

CKAP4 Antibody

Catalog No: #37490

Orders: order@signalwayantibody.com

Support: tech@signalwayantibody.com

Description

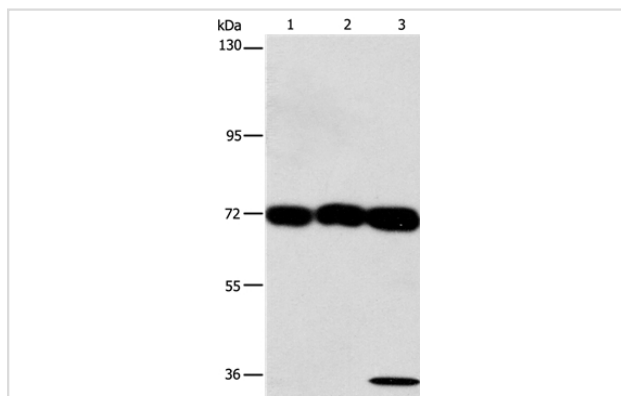
Product Name	CKAP4 Antibody
Host Species	Rabbit
Clonality	Polyclonal
Purification	Antigen affinity purification.
Applications	WB IHC
Species Reactivity	Hu Ms
Specificity	The antibody detects endogenous levels of total CKAP4 protein.
Immunogen Type	Peptide
Immunogen Description	Synthetic peptide corresponding to residues near the C terminal of human cytoskeleton-associated protein 4
Target Name	CKAP4
Other Names	p63; CLIMP-63; ERGIC-63
Accession No.	Swiss-Prot#: Q07065NCBI Gene ID: 10970Gene Accssion: NP_006816
Uniprot	Q07065
GeneID	10970;
SDS-PAGE MW	66kd
Concentration	2.5mg/ml
Formulation	Rabbit IgG in pH7.4 PBS, 0.05% NaN ₃ , 40% Glycerol.
Storage	Store at -20°C

Application Details

Western blotting: 1:1000-1:5000

Immunohistochemistry: 1:50-1:200

Images



Gel: 6%SDS-PAGE

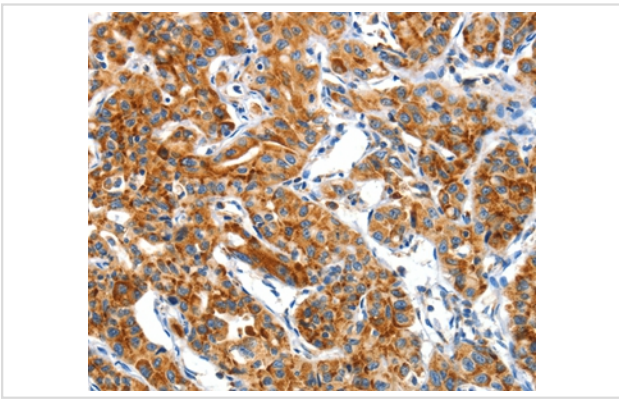
Lysates (from left to right): 293T, hepG2 and A549 cell

Amount of lysate: 40ug per lane

Primary antibody: 1/1250 dilution

Secondary antibody dilution: 1/8000

Exposure time: 30 seconds



Immunohistochemical analysis of paraffin-embedded Human lung cancer tissue using #37490 at dilution 1/50.

Background

CKAP4 (cytoskeleton-associated protein 4), also known as p63, CLIMP-63 or ERGIC-63, is a 602 amino acid single-pass type II transmembrane protein that links the endoplasmic reticulum (ER) to the cytoskeleton. Considered a novel protein in maintaining ER morphology, CKAP4 anchors the ER to microtubules which is required for maintaining ER spatial distribution during interphase of the cell cycle. CKAP4 can be reversibly palmitoylated and phosphorylated and is a major substrate of the palmitoyl acyltransferase, ZDHHC2.?

Note: This product is for in vitro research use only