

CLTC Antibody

Catalog No: #37491

Orders: order@signalwayantibody.comSupport: tech@signalwayantibody.com

Description

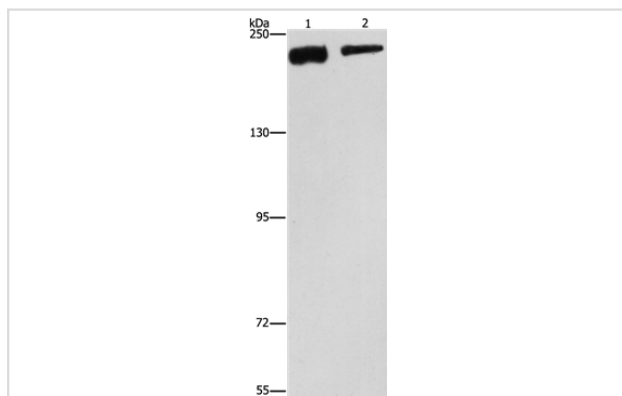
Product Name	CLTC Antibody
Host Species	Rabbit
Clonality	Polyclonal
Purification	Antigen affinity purification.
Applications	WB IHC
Species Reactivity	Hu Ms Rt
Specificity	The antibody detects endogenous levels of total CLTC protein.
Immunogen Type	Peptide
Immunogen Description	Synthetic peptide corresponding to a region derived from internal residues of human clathrin, heavy chain (Hc)
Target Name	CLTC
Other Names	Hc; CHC; CHC17; CLH-17; CLTCL2
Accession No.	Swiss-Prot#: Q00610NCBI Gene ID: 1213Gene Accssion: NP_004850
Uniprot	Q00610
GeneID	1213;
SDS-PAGE MW	192kd
Concentration	2.7mg/ml
Formulation	Rabbit IgG in pH7.4 PBS, 0.05% NaN ₃ , 40% Glycerol.
Storage	Store at -20°C

Application Details

Western blotting: 1:200-1:1000

Immunohistochemistry: 1:50-1:200

Images



Gel: 6%SDS-PAGE

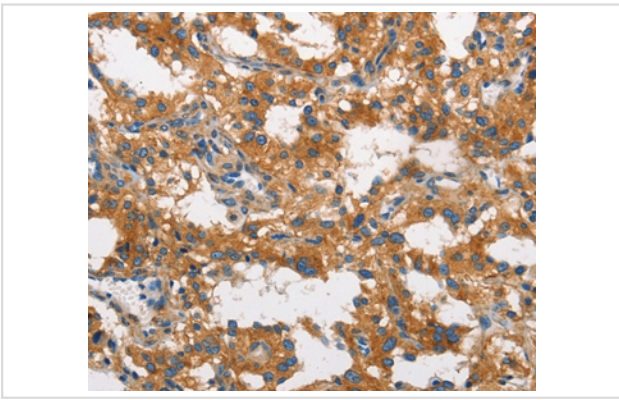
Lysates (from left to right): NIH/3T3 and hela cell

Amount of lysate: 40ug per lane

Primary antibody: 1/300 dilution

Secondary antibody dilution: 1/8000

Exposure time: 40 seconds



Immunohistochemical analysis of paraffin-embedded Human thyroid cancer tissue using #37491 at dilution 1/60.

Background

Clathrin is a major protein component of the cytoplasmic face of intracellular organelles, called coated vesicles and coated pits. These specialized organelles are involved in the intracellular trafficking of receptors and endocytosis of a variety of macromolecules. The basic subunit of the clathrin coat is composed of three heavy chains and three light chains.

Note: This product is for in vitro research use only