

IFT74 Antibody

Catalog No: #37493

Orders: order@signalwayantibody.com

Support: tech@signalwayantibody.com

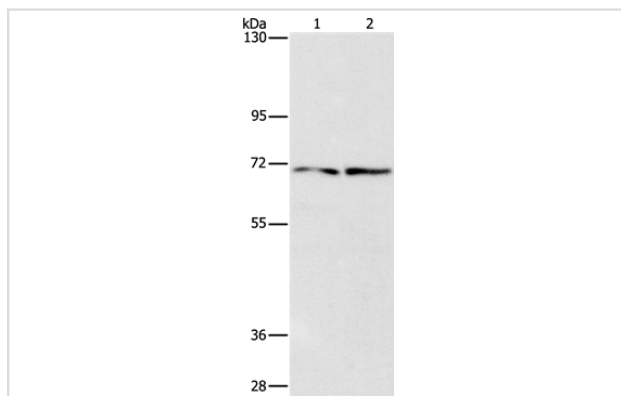
Description

Product Name	IFT74 Antibody
Host Species	Rabbit
Clonality	Polyclonal
Purification	Antigen affinity purification.
Applications	WB
Species Reactivity	Hu
Specificity	The antibody detects endogenous levels of total IFT74 protein.
Immunogen Type	Peptide
Immunogen Description	Synthetic peptide corresponding to a region derived from internal residues of human intraflagellar transport 74 homolog (Chlamydomonas)
Target Name	IFT74
Other Names	CMG1; CCDC2; CMG-1
Accession No.	Swiss-Prot#: Q96LB3NCBI Gene ID: 80173Gene Accssion: NP_001092692
Uniprot	Q96LB3
GeneID	80173;
SDS-PAGE MW	69kd
Concentration	2.8mg/ml
Formulation	Rabbit IgG in pH7.4 PBS, 0.05% NaN ₃ , 40% Glycerol.
Storage	Store at -20°C

Application Details

Western blotting: 1:500-1:2000

Images



Gel: 8%SDS-PAGE
 Lysates (from left to right): HepG2 and 293T cell
 Amount of lysate: 40ug per lane
 Primary antibody: 1/1400 dilution
 Secondary antibody dilution: 1/8000
 Exposure time: 15seconds

Background

Capillary morphogenesis protein 1 (CMG1), also known as intraflagellar transport protein 74 (ITP74) or coiled-coil domain-containing protein 2

(CCDC2), is a 600 amino acid human homologue of IFT-71, a complex B protein supporting intraflagellar transport (IFT) in Chlamydomonas. CMG1 localizes to the cytoplasmic vesicle and is highly expressed in adult and fetal kidney and testis, with lower levels of expression in adult heart, placenta, lung, liver and pancreas, and in fetal heart, lung and liver. CMG1 has been suggested to have a role in the primary cilia of HUVEC, and it also functions as a transcriptional regulator of cyclin D2 in spermatocyte-derived cells.

Note: This product is for in vitro research use only