

PLA2G4B Antibody

Catalog No: #37499

Orders: order@signalwayantibody.com

Support: tech@signalwayantibody.com

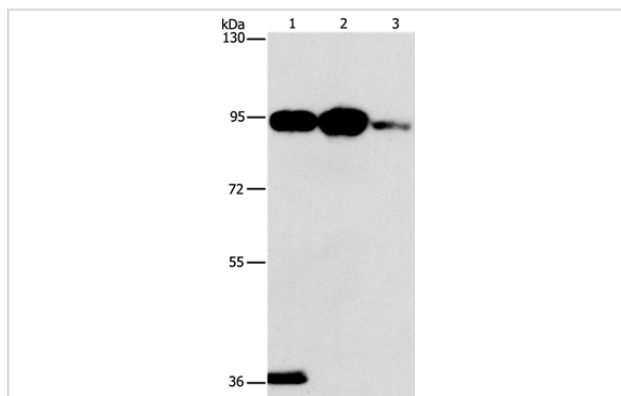
Description

Product Name	PLA2G4B Antibody
Host Species	Rabbit
Clonality	Polyclonal
Purification	Antigen affinity purification.
Applications	WB
Species Reactivity	Hu Ms
Specificity	The antibody detects endogenous levels of total PLA2G4B protein.
Immunogen Type	Peptide
Immunogen Description	Synthetic peptide corresponding to a region derived from internal residues of human phospholipase A2, group IVB (cytosolic)
Target Name	PLA2G4B
Other Names	HsT16992; cPLA2-beta
Accession No.	Swiss-Prot#: P0C869NCBI Gene ID: 100137049Gene Accssion: NP_001108105
Uniprot	P0C869
GeneID	100137049;8681;
SDS-PAGE MW	88kd
Concentration	2.8mg/ml
Formulation	Rabbit IgG in pH7.4 PBS, 0.05% NaN ₃ , 40% Glycerol.
Storage	Store at -20°C

Application Details

Western blotting: 1:1000-1:5000

Images



Gel: 6%SDS-PAGE

Lysates (from left to right): Mouse stomach tissue, 293T and Jurkat cell

Amount of lysate: 40ug per lane

Primary antibody: 1/1400 dilution

Secondary antibody dilution: 1/8000

Exposure time: 1 minute

Background

This gene encodes a member of the cytosolic phospholipase A2 protein family. Phospholipase A2 enzymes hydrolyze the sn-2 bond of phospholipids,

releasing lysophospholipids and fatty acids. This enzyme may be associated with mitochondria and early endosomes. Most tissues also express read-through transcripts from the upstream gene into this gene, some of which may encode fusion proteins combining the N-terminus of the upstream gene including its JmjC domain with the almost complete coding region of this gene, including the C2 and cytoplasmic phospholipase A2 domains.

Note: This product is for in vitro research use only