

CR1 Antibody

Catalog No: #37501

Orders: order@signalwayantibody.comSupport: tech@signalwayantibody.com

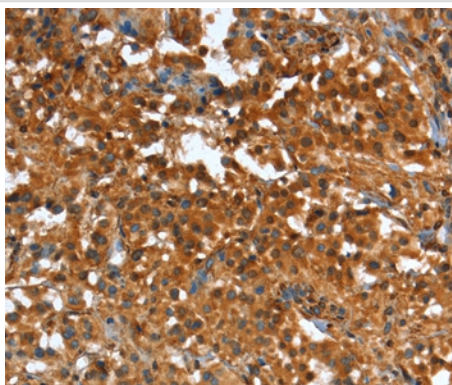
Description

Product Name	CR1 Antibody
Host Species	Rabbit
Clonality	Polyclonal
Purification	Antigen affinity purification.
Applications	IHC
Species Reactivity	Hu
Specificity	The antibody detects endogenous levels of total CR1 protein.
Immunogen Type	Peptide
Immunogen Description	Synthetic peptide corresponding to residues near the C terminal of human complement component (3b/4b) receptor 1 (Knops blood group)
Target Name	CR1
Other Names	KN; C3BR; C4BR; CD35
Accession No.	Swiss-Prot#: P17927NCBI Gene ID: 1378Gene Accssion: NP_000564
Uniprot	P17927
GeneID	1378;
Concentration	2.8mg/ml
Formulation	Rabbit IgG in pH7.4 PBS, 0.05% NaN ₃ , 40% Glycerol.
Storage	Store at -20°C

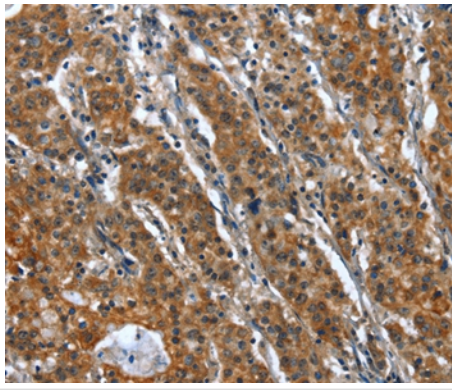
Application Details

Immunohistochemistry: 1:25-1:100

Images



Immunohistochemical analysis of paraffin-embedded Human thyroid cancer tissue using #37501 at dilution 1/25.



Immunohistochemical analysis of paraffin-embedded Human gastric cancer tissue using #37501 at dilution 1/25.

Background

This gene is a member of the receptors of complement activation (RCA) family and is located in the 'cluster RCA' region of chromosome 1. The gene encodes a monomeric single-pass type I membrane glycoprotein found on erythrocytes, leukocytes, glomerular podocytes, and splenic follicular dendritic cells. The Knops blood group system is a system of antigens located on this protein. The protein mediates cellular binding to particles and immune complexes that have activated complement. Decreases in expression of this protein and/or mutations in its gene have been associated with gallbladder carcinomas, mesangiocapillary glomerulonephritis, systemic lupus erythematosus and sarcoidosis.

Note: This product is for in vitro research use only