

CRELD1 Antibody

Catalog No: #37502

Orders: order@signalwayantibody.com

Support: tech@signalwayantibody.com

Description

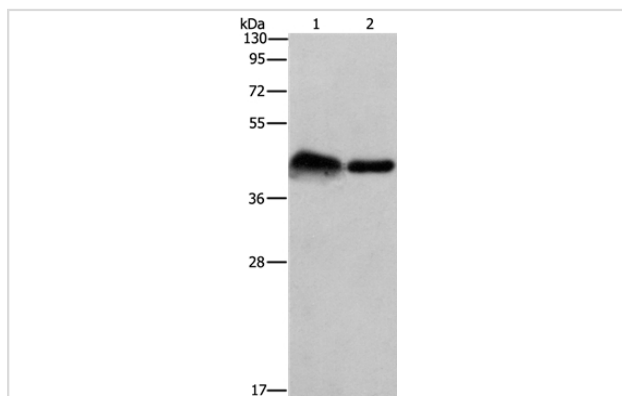
Product Name	CRELD1 Antibody
Host Species	Rabbit
Clonality	Polyclonal
Purification	Antigen affinity purification.
Applications	WB IHC
Species Reactivity	Hu Ms Rt
Specificity	The antibody detects endogenous levels of total CRELD1 protein.
Immunogen Type	Peptide
Immunogen Description	Synthetic peptide corresponding to residues near the C terminal of human cysteine-rich with EGF-like domains 1
Target Name	CRELD1
Other Names	AVSD2; CIRRIIN
Accession No.	Swiss-Prot#: Q96HD1NCBI Gene ID: 78987Gene Accssion: NP_001026887
Uniprot	Q96HD1
GeneID	78987;
SDS-PAGE MW	45kd
Concentration	2.8mg/ml
Formulation	Rabbit IgG in pH7.4 PBS, 0.05% NaN ₃ , 40% Glycerol.
Storage	Store at -20°C

Application Details

Western blotting: 1:500-1:2000

Immunohistochemistry: 1:50-1:200

Images



Gel: 10%SDS-PAGE

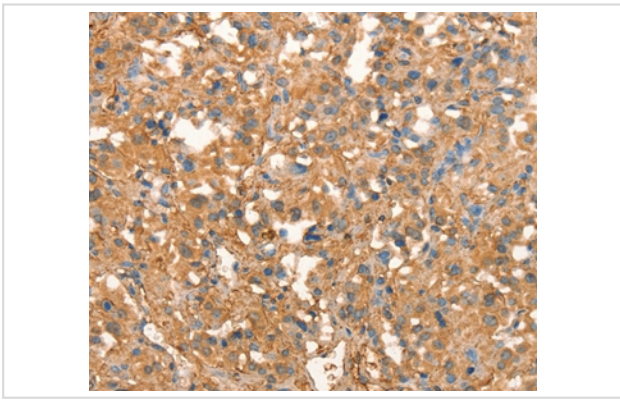
Lysates (from left to right): Mouse bladder tissue and 293T cell

Amount of lysate: 40ug per lane

Primary antibody: 1/930 dilution

Secondary antibody dilution: 1/8000

Exposure time: 5 minutes



Immunohistochemical analysis of paraffin-embedded Human thyroid cancer tissue using #37502 at dilution 1/40.

Background

This gene encodes a member of a subfamily of epidermal growth factor-related proteins. The encoded protein is characterized by a cysteine-rich with epidermal growth factor-like domain. This protein may function as a cell adhesion molecule. Mutations in this gene are the cause of atrioventricular septal defect. Alternate splicing results in multiple transcript variants.

Note: This product is for in vitro research use only