

CRHR2 Antibody

Catalog No: #37504

Orders: order@signalwayantibody.com

Support: tech@signalwayantibody.com

Description

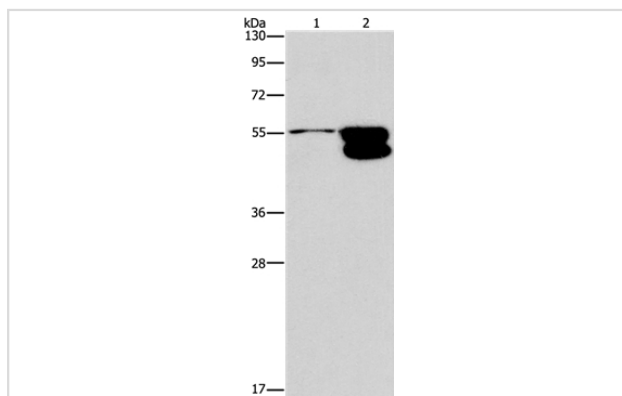
Product Name	CRHR2 Antibody
Host Species	Rabbit
Clonality	Polyclonal
Purification	Antigen affinity purification.
Applications	WB IHC
Species Reactivity	Hu Ms Rt
Specificity	The antibody detects endogenous levels of total CRHR2 protein.
Immunogen Type	Peptide
Immunogen Description	Synthetic peptide corresponding to a region derived from internal residues of human corticotropin releasing hormone receptor 2
Target Name	CRHR2
Other Names	CRF2; CRFR2; CRF-RB; HM-CRF
Accession No.	Swiss-Prot#: Q13324NCBI Gene ID: 1395Gene Accssion: NP_001189404
Uniprot	Q13324
GeneID	1395;
SDS-PAGE MW	48kd
Concentration	1.9mg/ml
Formulation	Rabbit IgG in pH7.4 PBS, 0.05% NaN ₃ , 40% Glycerol.
Storage	Store at -20°C

Application Details

Western blotting: 1:200-1:1000

Immunohistochemistry: 1:25-1:100

Images



Gel: 8%SDS-PAGE

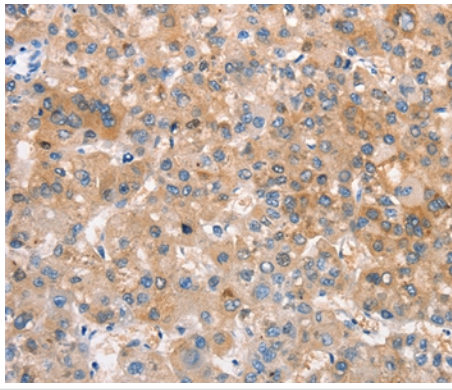
Lysates (from left to right): NIH/3T3 cell and mouse brain tissue

Amount of lysate: 40ug per lane

Primary antibody: 1/650 dilution

Secondary antibody dilution: 1/8000

Exposure time: 10 minutes



Immunohistochemical analysis of paraffin-embedded Human liver cancer tissue using #37504 at dilution 1/25.

Background

The protein encoded by this gene belongs to the G-protein coupled receptor 2 family, and the subfamily of corticotropin releasing hormone receptor. This receptor shows high affinity for corticotropin releasing hormone (CRH), and also binds CRH-related peptides such as urocortin. CRH is synthesized in the hypothalamus, and plays an important role in coordinating the endocrine, autonomic, and behavioral responses to stress and immune challenge. Studies in mice suggest that this receptor maybe involved in mediating cardiovascular homeostasis. Alternatively spliced transcript variants encoding different isoforms have been described for this gene.

Note: This product is for in vitro research use only