

COL7A1 Antibody

Catalog No: #37510

Orders: order@signalwayantibody.comSupport: tech@signalwayantibody.com

Description

| | |
|-----------------------|--|
| Product Name | COL7A1 Antibody |
| Host Species | Rabbit |
| Clonality | Polyclonal |
| Purification | Antigen affinity purification. |
| Applications | ELISA, WB, IHC |
| Species Reactivity | Hu |
| Specificity | The antibody detects endogenous levels of total COL7A1 protein. |
| Immunogen Type | Peptide |
| Immunogen Description | Synthetic peptide corresponding to residues near the C terminal of human collagen, type VII, alpha 1 |
| Target Name | COL7A1 |
| Other Names | EBD1; EBR1; EBDCT |
| Accession No. | Swiss-Prot#: Q02388NCBI Gene ID: 1294Gene Accssion: NP_000085 |
| Uniprot | Q02388 |
| GeneID | 1294; |
| Concentration | 1.2 mg/ml |
| Formulation | Rabbit IgG in pH7.4 PBS, 0.05% NaN ₃ , 40% Glycerol. |
| Storage | Store at -20°C |

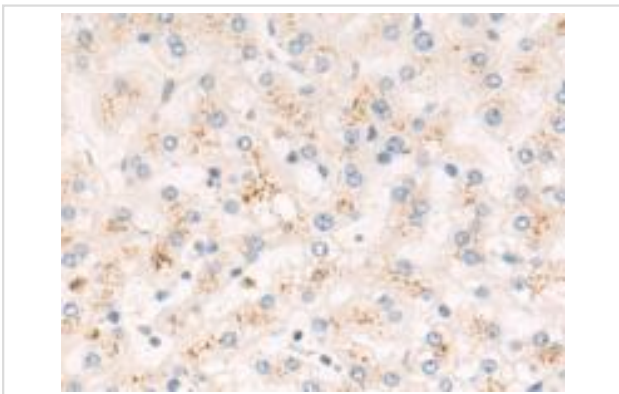
Application Details

Predicted MW: 295 kDa

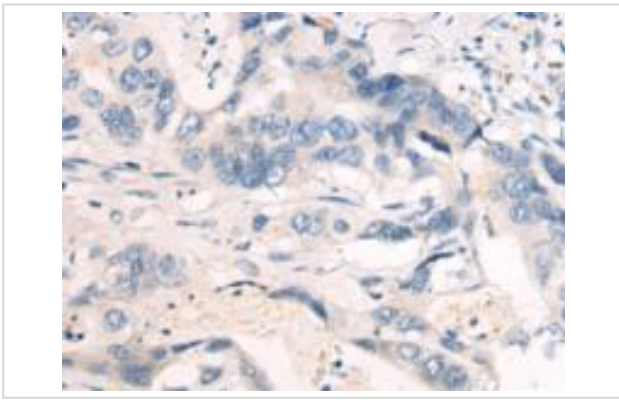
Western blotting: 1:500-1:2000

Immunohistochemistry: 1:50-1:100

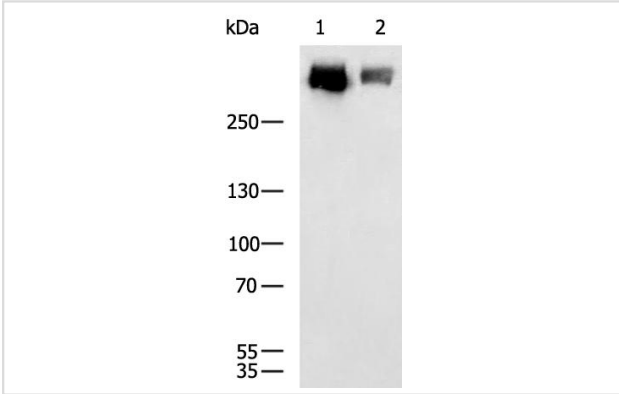
Images



The image is immunohistochemistry of paraffin-embedded Human liver cancer tissue using COL7A1 Antibody at dilution 1/50. (Original magnification: \times 200)



The image is immunohistochemistry of paraffin-embedded Human colorectal cancer tissue using COL7A1 Antibody at dilution 1/50. (Original magnification: \times 200)



Gel: 6%SDS-PAGE Lysate: 40 μ g Lane 1-2: SKOV3, HeLa cell lysates Primary antibody: COL7A1 Antibody at dilution 1/600 Secondary antibody: Goat anti rabbit IgG at 1/5000 dilution Exposure time: 10 seconds

Background

This gene encodes the alpha chain of type VII collagen. The type VII collagen fibril, composed of three identical alpha collagen chains, is restricted to the basement zone beneath stratified squamous epithelia. It functions as an anchoring fibril between the external epithelia and the underlying stroma. Mutations in this gene are associated with all forms of dystrophic epidermolysis bullosa. In the absence of mutations, however, an acquired form of this disease can result from an autoimmune response made to type VII collagen.

Note: This product is for in vitro research use only