

MT-CYB Antibody

Catalog No: #37517

Orders: order@signalwayantibody.comSupport: tech@signalwayantibody.com

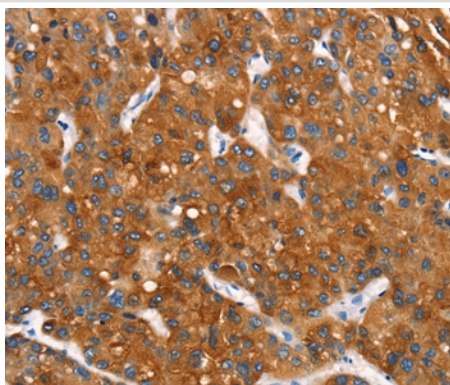
Description

Product Name	MT-CYB Antibody
Host Species	Rabbit
Clonality	Polyclonal
Purification	Antigen affinity purification.
Applications	IHC
Species Reactivity	Hu
Specificity	The antibody detects endogenous levels of total MT-CYB protein.
Immunogen Type	Peptide
Immunogen Description	Synthetic peptide corresponding to a region derived from internal residues of human mitochondrially encoded cytochrome b
Target Name	MT-CYB
Other Names	MTCYB; CYTB
Accession No.	Swiss-Prot#: P00156NCBI Gene ID: 4519Gene Accssion: YP_003024038
Uniprot	P00156
GeneID	4519;
Concentration	2.4mg/ml
Formulation	Rabbit IgG in pH7.4 PBS, 0.05% NaN ₃ , 40% Glycerol.
Storage	Store at -20°C

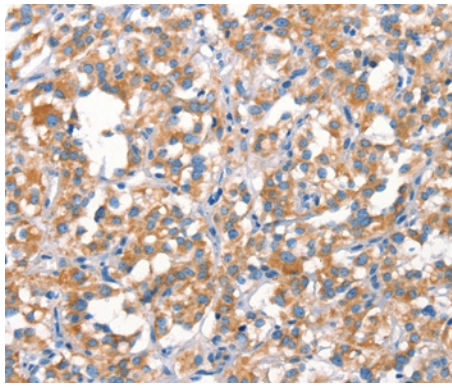
Application Details

Immunohistochemistry: 1:50-1:200

Images



Immunohistochemical analysis of paraffin-embedded Human liver cancer tissue using #37517 at dilution 1/30.



Immunohistochemical analysis of paraffin-embedded Human thyroid cancer tissue using #37517 at dilution 1/30.

Background

Cytochrome b is a component of the ubiquinol-cytochrome c reductase complex, which is a respiratory chain that generates an electrochemical potential, coupled to ATP synthesis. The principal components of the b-c1 complex are cytochrome b, cytochrome c1, and the rieske protein. Cytochrome b possesses two heme groups, which are not covalently attached to the protein. Mutations in cytochrome b are associated with LeberB'B—s hereditary optic neuropathy and with myopathy.

Note: This product is for in vitro research use only