

## CYP2B6 Antibody

Catalog No: #37518

Orders: order@signalwayantibody.com

Support: tech@signalwayantibody.com

## Description

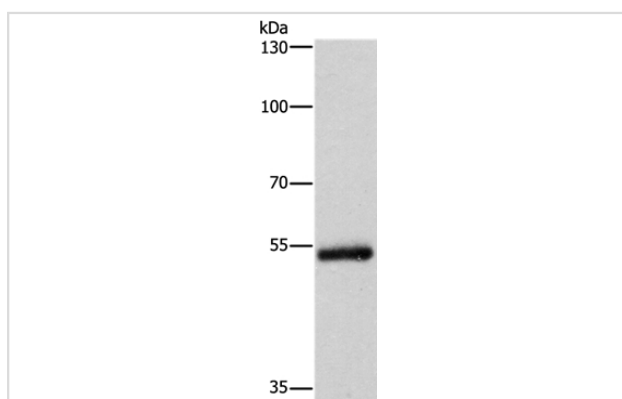
|                       |   |
|-----------------------|---|
| Product Name          | CYP2B6 Antibody   |
| Host Species          | Rabbit  |
| Clonality             | Polyclonal  |
| Purification          | Antigen affinity purification.  |
| Applications          | WB IHC  |
| Species Reactivity    | Hu  |
| Specificity           | The antibody detects endogenous levels of total CYP2B6 protein.   |
| Immunogen Type        | Peptide   |
| Immunogen Description | Synthetic peptide corresponding to a region derived from internal residues of human cytochrome P450, family 2, subfamily B, polypeptide 6 |
| Target Name           | CYP2B6  |
| Other Names           | CPB6; EFVM; IIB1; P450; CYP2B; CYP2B7; CYP2B7P; CYP11B6   |
| Accession No.         | Swiss-Prot#: P20813NCBI Gene ID: 1555Gene Accssion: NP_000758   |
| Uniprot               | P20813  |
| GeneID                | 1555;   |
| SDS-PAGE MW           | 56kd  |
| Concentration         | 2.9mg/ml  |
| Formulation           | Rabbit IgG in pH7.4 PBS, 0.05% NaN <sub>3</sub> , 40% Glycerol.   |
| Storage               | Store at -20°C  |

## Application Details

Western blotting: 1:200-1:1000

Immunohistochemistry: 1:25-1:100

## Images



Gel: 8%SDS-PAGE

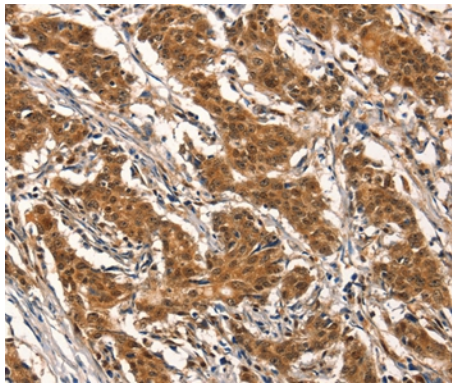
Lysates (from left to right): Human colon cancer tissue

Amount of lysate: 40ug per lane

Primary antibody: 1/400 dilution

Secondary antibody dilution: 1/8000

Exposure time: 4 minutes



Immunohistochemical analysis of paraffin-embedded Human gastric cancer tissue using #37518 at dilution 1/25.

## Background

This gene, CYP2B6, encodes a member of the cytochrome P450 superfamily of enzymes. The cytochrome P450 proteins are monooxygenases which catalyze many reactions involved in drug metabolism and synthesis of cholesterol, steroids and other lipids. This protein localizes to the endoplasmic reticulum and its expression is induced by phenobarbital. The enzyme is known to metabolize some xenobiotics, such as the anti-cancer drugs cyclophosphamide and ifosfamide.

Note: This product is for in vitro research use only