

DAAM1 Antibody

Catalog No: #37519

Orders: order@signalwayantibody.com

Support: tech@signalwayantibody.com

Description

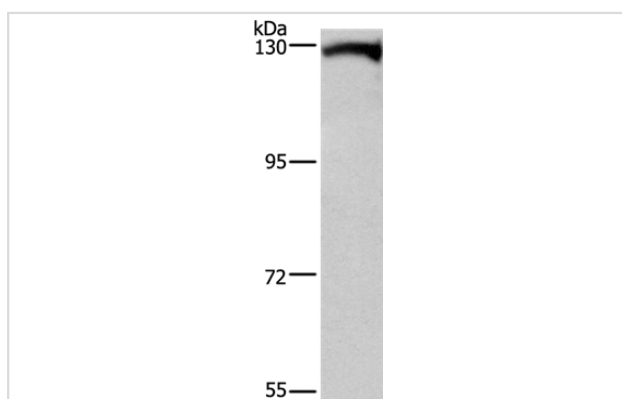
Product Name	DAAM1 Antibody
Host Species	Rabbit
Clonality	Polyclonal
Purification	Antigen affinity purification.
Applications	WB IHC
Species Reactivity	Hu Ms
Specificity	The antibody detects endogenous levels of total DAAM1 protein.
Immunogen Type	Peptide
Immunogen Description	Synthetic peptide corresponding to a region derived from internal residues of human dishevelled associated activator of morphogenesis 1
Target Name	DAAM1
Other Names	DAAM1; FLJ41657; KIAA0666
Accession No.	Swiss-Prot#: Q9Y4D1NCBI Gene ID: 23002Gene Accsson: NP_001257449
Uniprot	Q9Y4D1
GeneID	23002;
SDS-PAGE MW	123kd
Concentration	3.1mg/ml
Formulation	Rabbit IgG in pH7.4 PBS, 0.05% NaN ₃ , 40% Glycerol.
Storage	Store at -20°C

Application Details

Western blotting: 1:200-1:1000

Immunohistochemistry: 1:50-1:200

Images



Gel: 6%SDS-PAGE

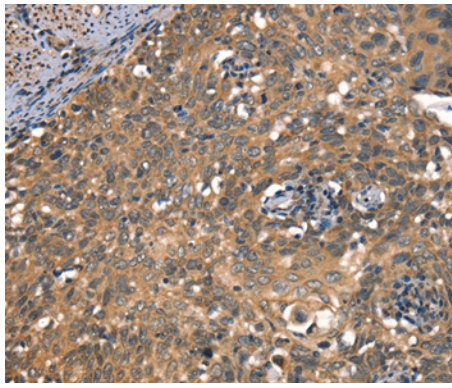
Lysates (from left to right): Human testis tissue

Amount of lysate: 40ug per lane

Primary antibody: 1/400 dilution

Secondary antibody dilution: 1/8000

Exposure time: 5 minutes



Immunohistochemical analysis of paraffin-embedded Human cervical cancer tissue using #37519 at dilution 1/50.

Background

Cell motility, adhesion, cytokinesis, and other functions of the cell cortex are mediated by reorganization of the actin cytoskeleton and several formin homology (FH) proteins have been associated with these processes. The protein encoded by this gene contains two FH domains and belongs to a novel FH protein subfamily implicated in cell polarity. A key regulator of cytoskeletal architecture, the small GTPase Rho, is activated during development by Wnt/Fz signaling to control cell polarity and movement. The protein encoded by this gene is thought to function as a scaffolding protein for the Wnt-induced assembly of a disheveled (Dvl)-Rho complex.?

Note: This product is for in vitro research use only