

RHOBTB2 Antibody

Catalog No: #37521

Orders: order@signalwayantibody.comSupport: tech@signalwayantibody.com

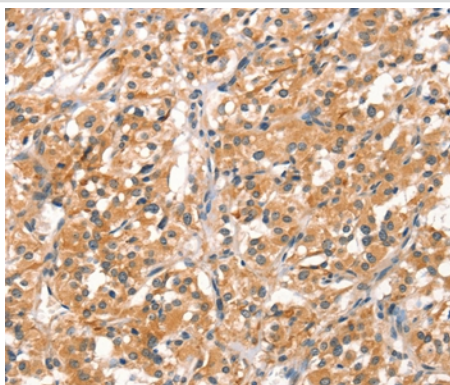
Description

Product Name	RHOBTB2 Antibody
Host Species	Rabbit
Clonality	Polyclonal
Purification	Antigen affinity purification.
Applications	IHC
Species Reactivity	Hu Ms
Specificity	The antibody detects endogenous levels of total RHOBTB2 protein.
Immunogen Type	Peptide
Immunogen Description	Synthetic peptide corresponding to residues near the N terminal of human Rho-related BTB domain containing 2
Target Name	RHOBTB2
Other Names	DBC2
Accession No.	Swiss-Prot#: Q9BYZ6NCBI Gene ID: 23221Gene Accsson: NP_055993
Uniprot	Q9BYZ6
GeneID	23221;
Concentration	2.4mg/ml
Formulation	Rabbit IgG in pH7.4 PBS, 0.05% NaN ₃ , 40% Glycerol.
Storage	Store at -20°C

Application Details

Immunohistochemistry: 1:25-1:100

Images



Immunohistochemical analysis of paraffin-embedded Human thyroid cancer tissue using #37521 at dilution 1/30.

Background

The protein encoded by this gene is a small Rho GTPase and a candidate tumor suppressor. The encoded protein interacts with the cullin-3 protein, a ubiquitin E3 ligase necessary for mitotic cell division. This protein inhibits the growth and spread of some types of breast cancer. Three transcript

variants encoding different isoforms have been found for this gene.

Note: This product is for in vitro research use only