

## DDAH2 Antibody

Catalog No: #37522

Orders: order@signalwayantibody.com

Support: tech@signalwayantibody.com

## Description

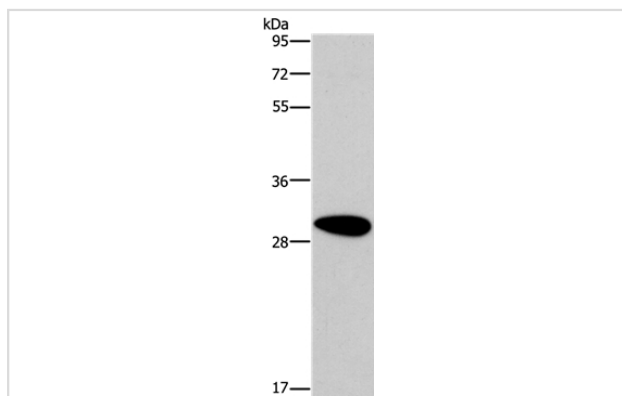
Product Name	DDAH2 Antibody
Host Species	Rabbit
Clonality	Polyclonal
Purification	Antigen affinity purification.
Applications	WB IHC
Species Reactivity	Hu Ms Rt
Specificity	The antibody detects endogenous levels of total DDAH2 protein.
Immunogen Type	Peptide
Immunogen Description	Synthetic peptide corresponding to residues near the N terminal of human dimethylarginine dimethylaminohydrolase 2
Target Name	DDAH2
Other Names	G6a; DDAH; NG30; DDAHII
Accession No.	Swiss-Prot#: O95865NCBI Gene ID: 23564Gene Accssion: NP_039268
Uniprot	O95865
GeneID	23564;
SDS-PAGE MW	30kd
Concentration	2.1mg/ml
Formulation	Rabbit IgG in pH7.4 PBS, 0.05% NaN <sub>3</sub> , 40% Glycerol.
Storage	Store at -20°C

## Application Details

Western blotting: 1:200-1:1000

Immunohistochemistry: 1:25-1:100

## Images



Gel: 10%SDS-PAGE

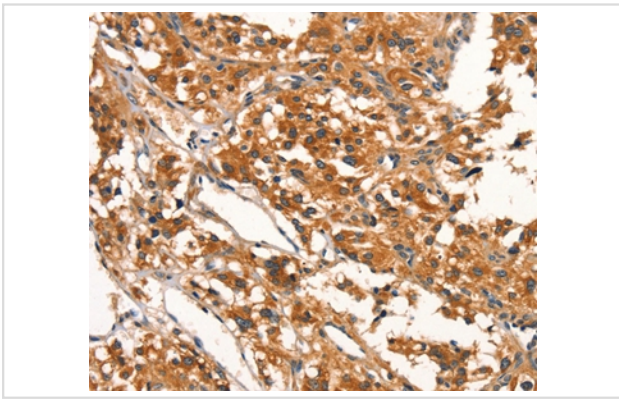
Lysates (from left to right): Human fetal brain tissue

Amount of lysate: 40ug per lane

Primary antibody: 1/300 dilution

Secondary antibody dilution: 1/8000

Exposure time: 30 seconds



Immunohistochemical analysis of paraffin-embedded Human thyroid cancer tissue using #37522 at dilution 1/15.

## Background

This gene belongs to the dimethylarginine dimethylaminohydrolase (DDAH) gene family. The encoded enzyme plays a role in nitric oxide generation by regulating cellular concentrations of methylarginines, which in turn inhibit nitric oxide synthase activity.

Note: This product is for in vitro research use only