

## DECR1 Antibody

Catalog No: #37524

Orders: order@signalwayantibody.com

Support: tech@signalwayantibody.com

## Description

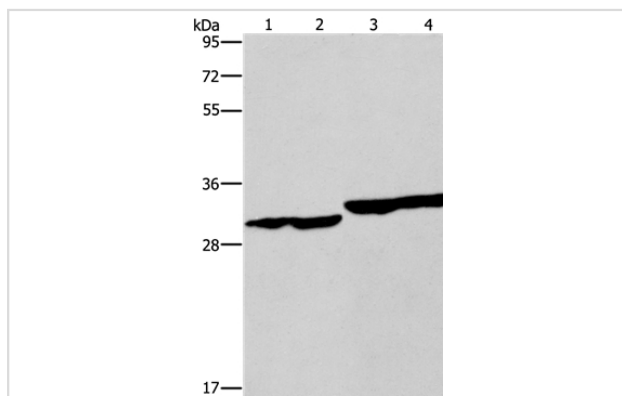
Product Name	DECR1 Antibody
Host Species	Rabbit
Clonality	Polyclonal
Purification	Antigen affinity purification.
Applications	WB IHC
Species Reactivity	Hu
Specificity	The antibody detects endogenous levels of total DECR1 protein.
Immunogen Type	Peptide
Immunogen Description	Synthetic peptide corresponding to residues near the C terminal of human 2,4-dienoyl CoA reductase 1, mitochondrial
Target Name	DECR1
Other Names	DECR; NADPH; SDR18C1
Accession No.	Swiss-Prot#: Q16698NCBI Gene ID: 1666Gene Accssion: NP_001350
Uniprot	Q16698
GeneID	1666;
SDS-PAGE MW	36kd
Concentration	3.2mg/ml
Formulation	Rabbit IgG in pH7.4 PBS, 0.05% NaN <sub>3</sub> , 40% Glycerol.
Storage	Store at -20°C

## Application Details

Western blotting: 1:500-1:2000

Immunohistochemistry: 1:50-1:200

## Images



Gel: 8%SDS-PAGE

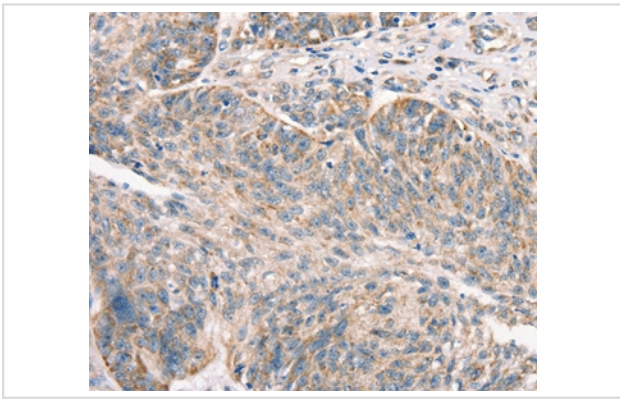
Lysates (from left to right): Human endometrial carcinoma and colon cancer tissue, human fetal liver tissue and PC3 cell

Amount of lysate: 40ug per lane

Primary antibody: 1/300 dilution

Secondary antibody dilution: 1/8000

Exposure time: 10 seconds



Immunohistochemical analysis of paraffin-embedded Human ovarian cancer tissue using #37524 at dilution 1/50.

## Background

This gene encodes an accessory enzyme which participates in the beta-oxidation and metabolism of unsaturated fatty acyl-CoA esters. Auxiliary enzyme of beta-oxidation. It participates in the metabolism of unsaturated fatty acyl-CoA esters having double bonds in both even- and odd-numbered positions. Catalyzes the NADP-dependent reduction of 2,4-dienoyl-CoA to yield trans-3-enoyl-CoA.

Note: This product is for in vitro research use only