

DTX1 Antibody

Catalog No: #37528

Orders: order@signalwayantibody.comSupport: tech@signalwayantibody.com

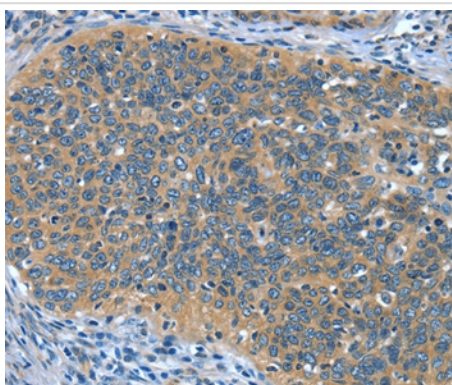
Description

Product Name	DTX1 Antibody
Host Species	Rabbit
Clonality	Polyclonal
Purification	Antigen affinity purification.
Applications	IHC
Species Reactivity	Hu Ms
Specificity	The antibody detects endogenous levels of total DTX1 protein.
Immunogen Type	Peptide
Immunogen Description	Synthetic peptide corresponding to a region derived from internal residues of human deltex homolog 1 (Drosophila)
Target Name	DTX1
Other Names	hDx-1
Accession No.	Swiss-Prot#: Q86Y01NCBI Gene ID: 1840Gene Accssion: NP_004407
Uniprot	Q86Y01
GeneID	1840;
Concentration	2.1mg/ml
Formulation	Rabbit IgG in pH7.4 PBS, 0.05% NaN ₃ , 40% Glycerol.
Storage	Store at -20°C

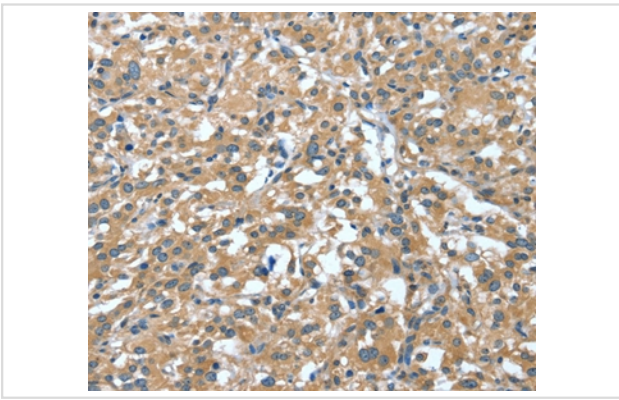
Application Details

Immunohistochemistry: 1:25-1:100

Images



Immunohistochemical analysis of paraffin-embedded Human cervical cancer tissue using #37528 at dilution 1/30.



Immunohistochemical analysis of paraffin-embedded Human thyroid cancer tissue using #37528 at dilution 1/30.

Background

Studies in *Drosophila* have identified this gene as encoding a positive regulator of the Notch-signaling pathway. The human gene encodes a protein of unknown function; however, it may play a role in basic helix-loop-helix transcription factor activity.?

Note: This product is for in vitro research use only