

ENDO G Antibody

Catalog No: #37547

Orders: order@signalwayantibody.comSupport: tech@signalwayantibody.com

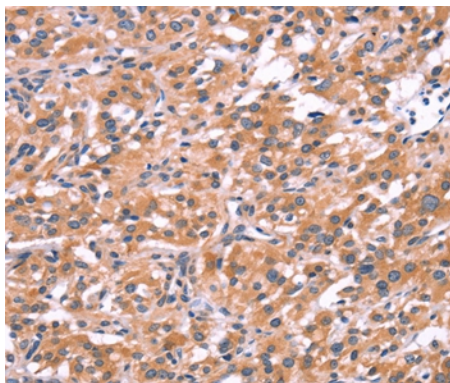
Description

Product Name	ENDO G Antibody
Host Species	Rabbit
Clonality	Polyclonal
Purification	Antigen affinity purification.
Applications	IHC
Species Reactivity	Hu
Specificity	The antibody detects endogenous levels of total ENDO G protein.
Immunogen Type	Peptide
Immunogen Description	Synthetic peptide corresponding to a region derived from internal residues of human endonuclease G
Target Name	ENDO G
Other Names	Endo G; ENDO G; endonuclease G; Endonuclease G; mitochondrial; FLJ27463; NUCG
Accession No.	Swiss-Prot#: Q14249NCBI Gene ID: 2021Gene Accssion: NP_004426
Uniprot	Q14249
GeneID	2021;
Concentration	1mg/ml
Formulation	Rabbit IgG in pH7.4 PBS, 0.05% NaN ₃ , 40% Glycerol.
Storage	Store at -20°C

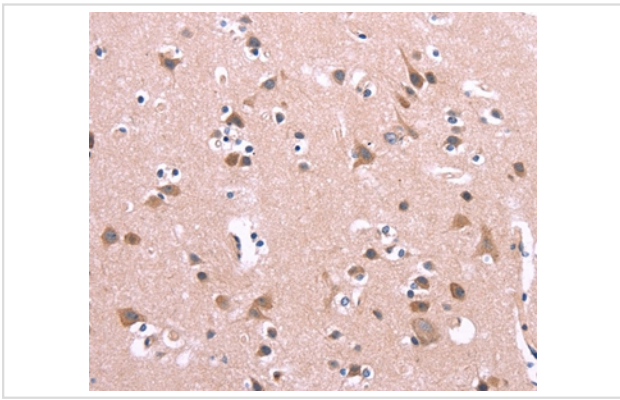
Application Details

Immunohistochemistry: 1:25-1:100

Images



Immunohistochemical analysis of paraffin-embedded Human thyroid cancer tissue using #37547 at dilution 1/15.



Immunohistochemical analysis of paraffin-embedded Human brain tissue using #37547 at dilution 1/15.

Background

The protein encoded by this gene is a nuclear encoded endonuclease that is localized in the mitochondrion. The encoded protein is widely distributed among animals and cleaves DNA at GC tracts. This protein is capable of generating the RNA primers required by DNA polymerase gamma to initiate replication of mitochondrial DNA.

Note: This product is for in vitro research use only