

EPGN Antibody

Catalog No: #37551

Orders: order@signalwayantibody.comSupport: tech@signalwayantibody.com

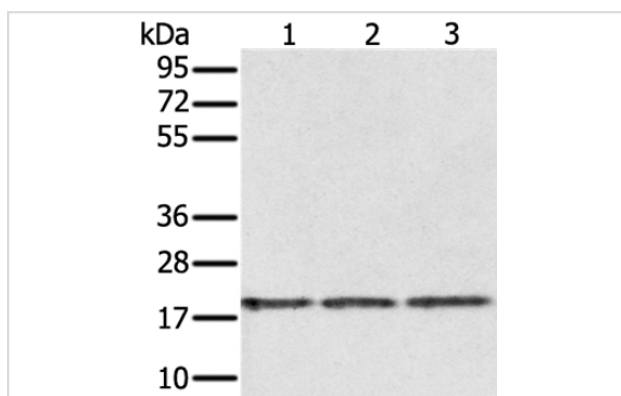
Description

Product Name	EPGN Antibody
Host Species	Rabbit
Clonality	Polyclonal
Purification	Antigen affinity purification.
Applications	WB
Species Reactivity	Hu Ms
Specificity	The antibody detects endogenous levels of total EPGN protein.
Immunogen Type	Peptide
Immunogen Description	Synthetic peptide corresponding to a region derived from internal residues of human epithelial mitogen
Target Name	EPGN
Other Names	EPG; PRO9904; ALGV3072
Accession No.	Swiss-Prot#: Q6UW88NCBI Gene ID: 255324Gene Accssion: NP_001257918/Q6UW88
Uniprot	Q6UW88
GeneID	255324;
SDS-PAGE MW	17kd
Concentration	1.2mg/ml
Formulation	Rabbit IgG in pH7.4 PBS, 0.05% NaN ₃ , 40% Glycerol.
Storage	Store at -20°C

Application Details

Western blotting: 1:200-1:1000

Images



Gel: 12%SDS-PAGE

Lysates (from left to right): Jurkat, 293T and hela cell

Amount of lysate: 40ug per lane

Primary antibody: 1/150 dilution

Secondary antibody dilution: 1/8000

Exposure time: 1 minute

Background

The protein encoded by this gene is a member of the epidermal growth factor family. Members of this family are ligands for the epidermal growth factor receptor and play a role in cell survival, proliferation and migration. This protein has been reported to have high mitogenic activity but low affinity for its

receptor. Expression of this transcript and protein have been reported in cancer specimens of the breast, bladder, and prostate. Alternative splicing results in multiple transcript variants.?

Note: This product is for in vitro research use only