

## MSMO1 Antibody

Catalog No: #37553

Orders: [order@signalwayantibody.com](mailto:order@signalwayantibody.com)Support: [tech@signalwayantibody.com](mailto:tech@signalwayantibody.com)

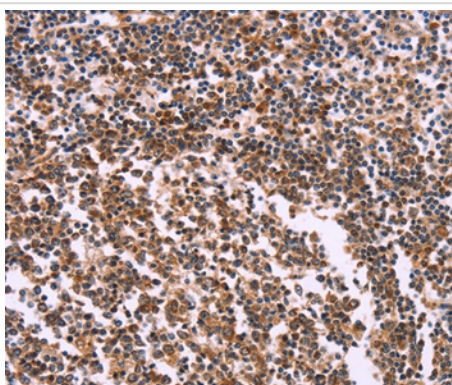
## Description

Product Name	MSMO1 Antibody
Host Species	Rabbit
Clonality	Polyclonal
Purification	Antigen affinity purification.
Applications	IHC
Species Reactivity	Hu
Specificity	The antibody detects endogenous levels of total MSMO1 protein.
Immunogen Type	Peptide
Immunogen Description	Synthetic peptide corresponding to a region derived from internal residues of human methylsterol monooxygenase 1
Target Name	MSMO1
Other Names	DESP4; ERG25; SC4MOL
Accession No.	Swiss-Prot#: Q15800NCBI Gene ID: 6307Gene Accssion: NP_006736
Uniprot	Q15800
GeneID	6307;
Concentration	1.3mg/ml
Formulation	Rabbit IgG in pH7.4 PBS, 0.05% NaN <sub>3</sub> , 40% Glycerol.
Storage	Store at -20°C

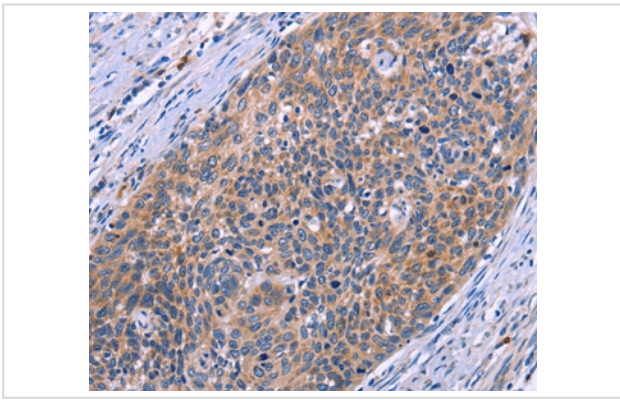
## Application Details

Immunohistochemistry: 1:25-1:100

## Images



Immunohistochemical analysis of paraffin-embedded Human tonsil cancer tissue using #37553 at dilution 1/20.



Immunohistochemical analysis of paraffin-embedded Human cervical cancer tissue using #37553 at dilution 1/20.

## Background

Sterol-C4-methyl oxidase-like protein was isolated based on its similarity to the yeast ERG25 protein. It contains a set of putative metal binding motifs with similarity to that seen in a family of membrane desaturases-hydroxylases. The protein is localized to the endoplasmic reticulum membrane and is believed to function in cholesterol biosynthesis. Alternatively spliced transcript variants encoding distinct isoforms have been found for this gene.

Note: This product is for in vitro research use only