

ESRRB Antibody

Catalog No: #37556

Orders: order@signalwayantibody.comSupport: tech@signalwayantibody.com

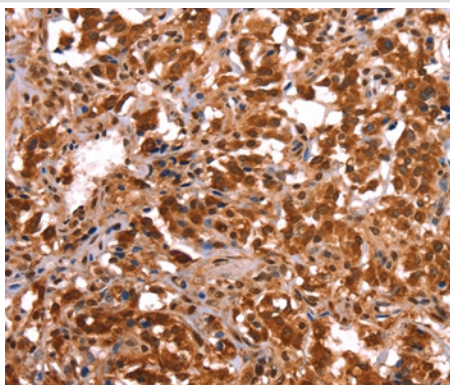
Description

Product Name	ESRRB Antibody
Host Species	Rabbit
Clonality	Polyclonal
Purification	Antigen affinity purification.
Applications	IHC
Species Reactivity	Hu
Specificity	The antibody detects endogenous levels of total ESRRB protein.
Immunogen Type	Peptide
Immunogen Description	Synthetic peptide corresponding to a region derived from internal residues of human estrogen-related receptor beta
Target Name	ESRRB
Other Names	ERR2; ERRb; ESRL2; NR3B2; DFNB35
Accession No.	Swiss-Prot#: O95718NCBI Gene ID: 2103Gene Accssion: NP_004443
Uniprot	O95718
GeneID	2103;
Concentration	2.6mg/ml
Formulation	Rabbit IgG in pH7.4 PBS, 0.05% NaN ₃ , 40% Glycerol.
Storage	Store at -20°C

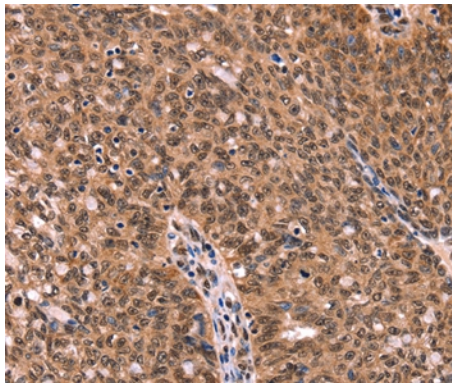
Application Details

Immunohistochemistry: 1:50-1:200

Images



Immunohistochemical analysis of paraffin-embedded Human thyroid cancer tissue using #37556 at dilution 1/40.



Immunohistochemical analysis of paraffin-embedded Human ovarian cancer tissue using #37556 at dilution 1/40.

Background

This gene encodes a protein with similarity to the estrogen receptor. Its function is unknown; however, a similar protein in mouse plays an essential role in placental development.

Note: This product is for in vitro research use only