

ESPL1 Antibody

Catalog No: #37557

Orders: order@signalwayantibody.com

Support: tech@signalwayantibody.com

Description

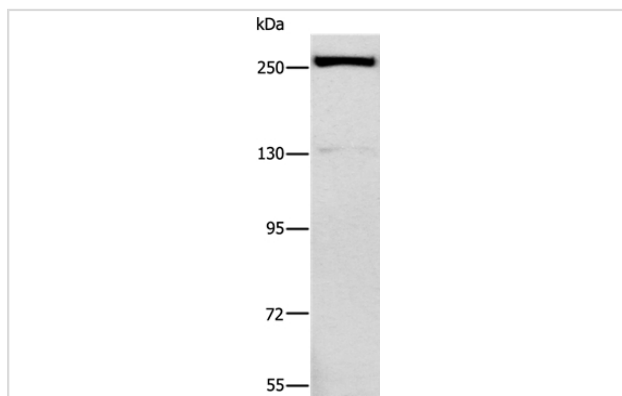
Product Name	ESPL1 Antibody
Host Species	Rabbit
Clonality	Polyclonal
Purification	Antigen affinity purification.
Applications	WB IHC
Species Reactivity	Hu
Specificity	The antibody detects endogenous levels of total ESPL1 protein.
Immunogen Type	Peptide
Immunogen Description	Synthetic peptide corresponding to a region derived from internal residues of human extra spindle pole bodies homolog 1 (<i>S. cerevisiae</i>)
Target Name	ESPL1
Other Names	ESP1; SEPA
Accession No.	Swiss-Prot#: Q14674NCBI Gene ID: 9700Gene Accssion: NP_036423
Uniprot	Q14674
GeneID	9700;
SDS-PAGE MW	233kd
Concentration	2mg/ml
Formulation	Rabbit IgG in pH7.4 PBS, 0.05% NaN ₃ , 40% Glycerol.
Storage	Store at -20°C

Application Details

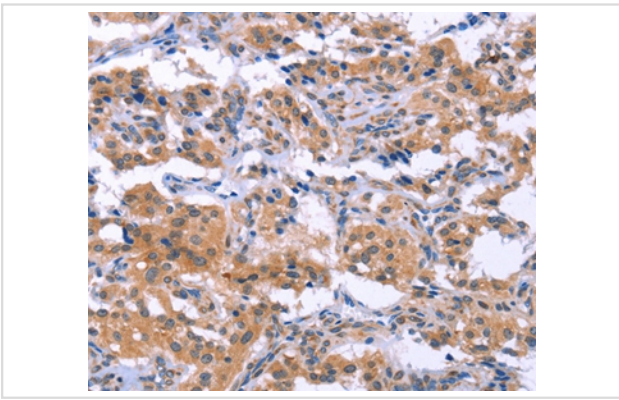
Western blotting: 1:200-1:1000

Immunohistochemistry: 1:25-1:100

Images



Gel: 6%SDS-PAGE
 Lysate: 40ug Raji cell
 Primary antibody: 1/500 dilution
 Secondary antibody dilution: 1/8000
 Exposure time: 1 second



Immunohistochemical analysis of paraffin-embedded Human thyroid cancer tissue using #37557 at dilution 1/40.

Background

Stable cohesion between sister chromatids before anaphase and their timely separation during anaphase are critical for chromosome inheritance. In vertebrates, sister chromatid cohesion is released in 2 steps via distinct mechanisms. The first step involves phosphorylation of STAG1 or STAG2 in the cohesin complex. The second step involves cleavage of the cohesin subunit SCC1 by ESPL1, or separase, which initiates the final separation of sister chromatids.

Note: This product is for in vitro research use only