

## ETFB Antibody

Catalog No: #37558

Orders: order@signalwayantibody.com

Support: tech@signalwayantibody.com

## Description

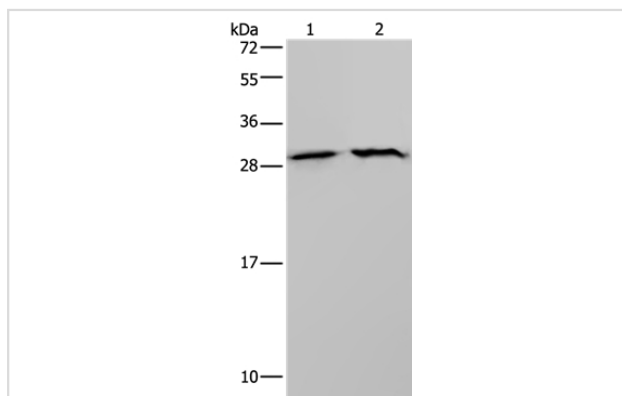
|                       |  |
|-----------------------|--|
| Product Name          | ETFB Antibody  |
| Host Species          | Rabbit   |
| Clonality             | Polyclonal   |
| Purification          | Antigen affinity purification.   |
| Applications          | WB IHC   |
| Species Reactivity    | Hu   |
| Specificity           | The antibody detects endogenous levels of total ETFB protein.  |
| Immunogen Type        | Peptide  |
| Immunogen Description | Synthetic peptide corresponding to a region derived from internal residues of human electron-transfer-flavoprotein, beta polypeptide |
| Target Name           | ETFB   |
| Other Names           | MADD; FP585  |
| Accession No.         | Swiss-Prot#: P38117NCBI Gene ID: 2109Gene Accssion: NP_001976/P38117   |
| Uniprot               | P38117   |
| GeneID                | 2109;  |
| SDS-PAGE MW           | 28kd   |
| Concentration         | 2.9mg/ml   |
| Formulation           | Rabbit IgG in pH7.4 PBS, 0.05% NaN <sub>3</sub> , 40% Glycerol.  |
| Storage               | Store at -20°C   |

## Application Details

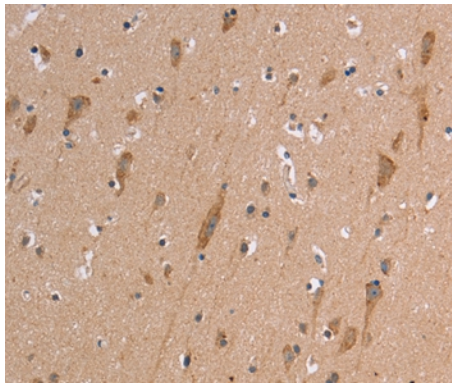
Western blotting: 1:200-1:1000

Immunohistochemistry: 1:50-1:200

## Images



Gel: 10%SDS-PAGE  
 Lysates (from left to right): LoVo and HeLa cell  
 Amount of lysate: 40ug per lane  
 Primary antibody: 1/200 dilution  
 Secondary antibody dilution: 1/8000  
 Exposure time: 20 seconds



Immunohistochemical analysis of paraffin-embedded Human brain tissue using #37558 at dilution 1/50.

## Background

This gene encodes electron-transfer-flavoprotein, beta polypeptide, which shuttles electrons between primary flavoprotein dehydrogenases involved in mitochondrial fatty acid and amino acid catabolism and the membrane-bound electron transfer flavoprotein ubiquinone oxidoreductase. The gene deficiencies have been implicated in type II glutaricaciduria. Alternatively spliced transcript variants have been found for this gene.

Note: This product is for in vitro research use only