

EXTL1 Antibody

Catalog No: #37561

Orders: order@signalwayantibody.comSupport: tech@signalwayantibody.com

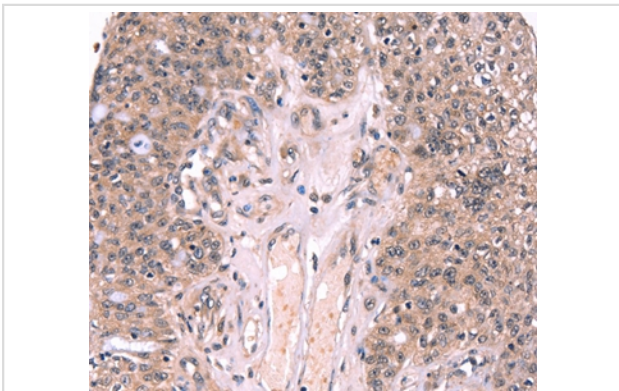
Description

Product Name	EXTL1 Antibody
Host Species	Rabbit
Clonality	Polyclonal
Purification	Antigen affinity purification.
Applications	IHC
Species Reactivity	Hu Ms
Specificity	The antibody detects endogenous levels of total EXTL1 protein.
Immunogen Type	Peptide
Immunogen Description	Synthetic peptide corresponding to residues near the C terminal of human exostosin-like glycosyltransferase 1
Target Name	EXTL1
Other Names	EXTL
Accession No.	Swiss-Prot#: Q92935NCBI Gene ID: 2134Gene Accssion: NP_004446
Uniprot	Q92935
GeneID	2134;
Concentration	1.8mg/ml
Formulation	Rabbit IgG in pH7.4 PBS, 0.05% NaN ₃ , 40% Glycerol.
Storage	Store at -20°C

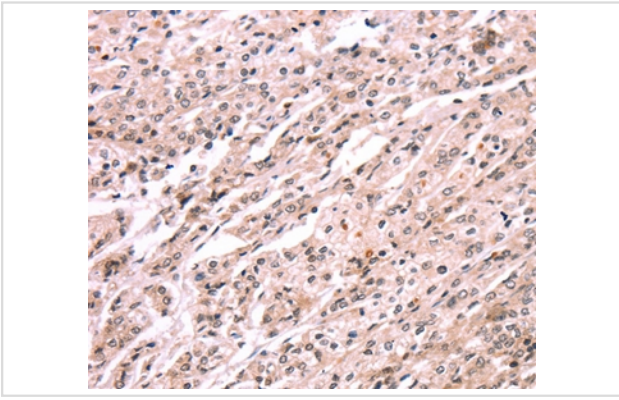
Application Details

Immunohistochemistry: 1:25-1:100

Images



Immunohistochemical analysis of paraffin-embedded Human ovarian cancer tissue using #37561 at dilution 1/20.



Immunohistochemical analysis of paraffin-embedded Human prostate cancer tissue using #37561 at dilution 1/20.

Background

This gene is a member of the multiple exostoses (EXT) family of glycosyltransferases, which function in the chain polymerization of heparan sulfate and heparin. The encoded protein harbors alpha 1,4- N-acetylglucosaminyltransferase activity, and is involved in chain elongation of heparan sulfate and possibly heparin.

Note: This product is for in vitro research use only