

## AMER1 Antibody

Catalog No: #37563

Orders: [order@signalwayantibody.com](mailto:order@signalwayantibody.com)Support: [tech@signalwayantibody.com](mailto:tech@signalwayantibody.com)

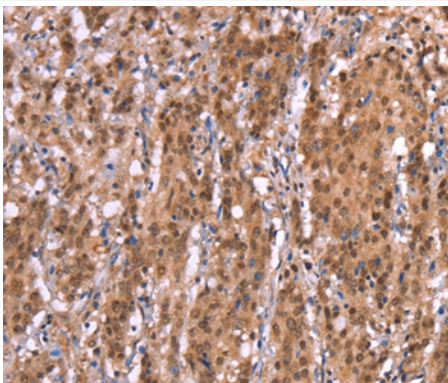
## Description

Product Name	AMER1 Antibody
Host Species	Rabbit
Clonality	Polyclonal
Purification	Antigen affinity purification.
Applications	IHC
Species Reactivity	Hu
Specificity	The antibody detects endogenous levels of total AMER1 protein.
Immunogen Type	Peptide
Immunogen Description	Synthetic peptide corresponding to residues near the C terminal of human APC membrane recruitment protein 1
Target Name	AMER1
Other Names	WTX; OSCS; FAM123B; RP11-403E24.2
Accession No.	Swiss-Prot#: Q5JTC6NCBI Gene ID: 139285Gene Accssion: NP_689637
Uniprot	Q5JTC6
GeneID	139285;
Concentration	2.2mg/ml
Formulation	Rabbit IgG in pH7.4 PBS, 0.05% NaN <sub>3</sub> , 40% Glycerol.
Storage	Store at -20°C

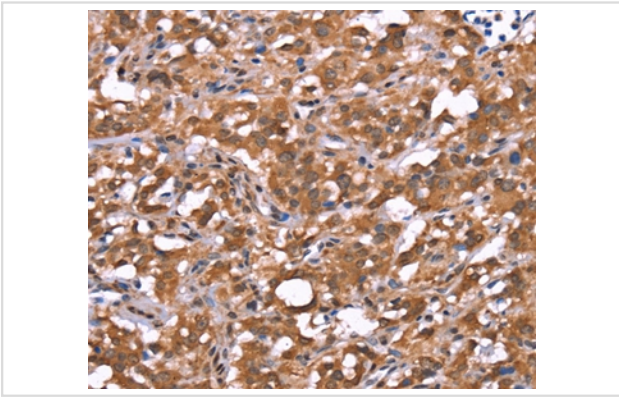
## Application Details

Immunohistochemistry: 1:50-1:200

## Images



Immunohistochemical analysis of paraffin-embedded Human gastric cancer tissue using #37563 at dilution 1/40.



Immunohistochemical analysis of paraffin-embedded Human thyroid cancer tissue using #37563 at dilution 1/40.

## Background

The protein encoded by this gene upregulates transcriptional activation by the Wilms tumor protein and interacts with many other proteins, including CTNNB1, APC, AXIN1, and AXIN2. Defects in this gene are a cause of osteopathia striata with cranial sclerosis (OSCS).

Note: This product is for in vitro research use only