

FAT1 Antibody

Catalog No: #37566

Orders: order@signalwayantibody.comSupport: tech@signalwayantibody.com

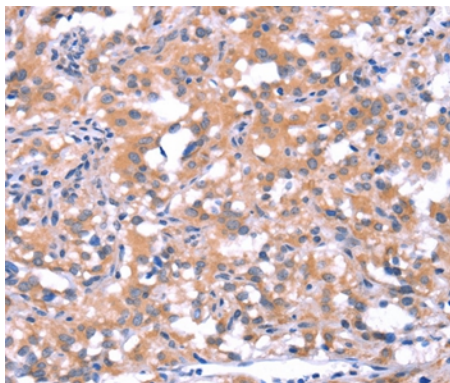
Description

| | |
|-----------------------|---|
| Product Name | FAT1 Antibody |
| Host Species | Rabbit |
| Clonality | Polyclonal |
| Purification | Antigen affinity purification. |
| Applications | IHC |
| Species Reactivity | Hu |
| Specificity | The antibody detects endogenous levels of total FAT1 protein. |
| Immunogen Type | Peptide |
| Immunogen Description | Synthetic peptide corresponding to a region derived from internal residues of human FAT atypical cadherin 1 |
| Target Name | FAT1 |
| Other Names | FAT; ME5; CDHF7; CDHR8; hFat1 |
| Accession No. | Swiss-Prot#: Q14517NCBI Gene ID: 2195Gene Accssion: NP_005236 |
| Uniprot | Q14517 |
| GeneID | 2195; |
| Concentration | 2.4mg/ml |
| Formulation | Rabbit IgG in pH7.4 PBS, 0.05% NaN ₃ , 40% Glycerol. |
| Storage | Store at -20°C |

Application Details

Immunohistochemistry: 1:50-1:200

Images



Immunohistochemical analysis of paraffin-embedded Human thyroid cancer tissue using #37566 at dilution 1/40.

Background

This gene is an ortholog of the *Drosophila* fat gene, which encodes a tumor suppressor essential for controlling cell proliferation during *Drosophila* development. The gene product is a member of the cadherin superfamily, a group of integral membrane proteins characterized by the presence of cadherin-type repeats. In addition to containing 34 tandem cadherin-type repeats, the gene product has five epidermal growth factor (EGF)-like repeats and one laminin A-G domain. This gene is expressed at high levels in a number of fetal epithelia. Its product probably functions as an

adhesion molecule and/or signaling receptor, and is likely to be important in developmental processes and cell communication. Transcript variants derived from alternative splicing and/or alternative promoter usage exist, but they have not been fully described.?

Note: This product is for in vitro research use only