

FOLH1B Antibody

Catalog No: #37575

Orders: order@signalwayantibody.comSupport: tech@signalwayantibody.com

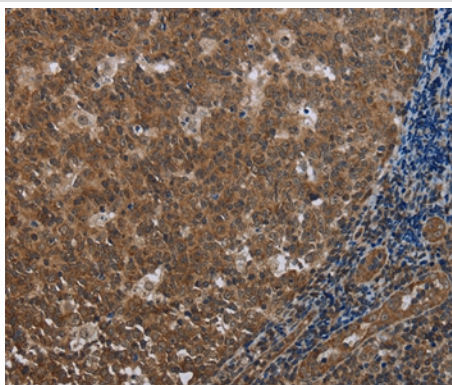
Description

Product Name	FOLH1B Antibody
Host Species	Rabbit
Clonality	Polyclonal
Purification	Antigen affinity purification.
Applications	IHC
Species Reactivity	Hu
Specificity	The antibody detects endogenous levels of total FOLH1B protein.
Immunogen Type	Peptide
Immunogen Description	Synthetic peptide corresponding to a region derived from internal residues of human folate hydrolase 1B
Target Name	FOLH1B
Other Names	PSM; GCP3; FOLH2; FOLHP; PSMAL; GCPIII; PSMA-LIKE
Accession No.	Swiss-Prot#: Q9HBA9NCBI Gene ID: 219595Gene Accssion: NP_710163
Uniprot	Q9HBA9
GeneID	219595;
Concentration	0.8mg/ml
Formulation	Rabbit IgG in pH7.4 PBS, 0.05% NaN ₃ , 40% Glycerol.
Storage	Store at -20°C

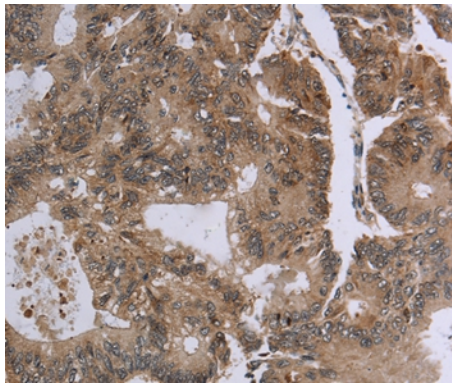
Application Details

Immunohistochemistry: 1:25-1:100

Images



Immunohistochemical analysis of paraffin-embedded Human colon cancer tissue using #37575 at dilution 1/20.



Immunohistochemical analysis of paraffin-embedded Human tonsil tissue using #37575 at dilution 1/20.

Background

PSM is an integral membrane protein, and PCTA-1 is related to the galectin gene family, which mediate both cell-cell and cell-matrix interactions in a manner similar to the selectin subgroup of C-type lectins. STEAP is a serpentine transmembrane cell-surface tumor-antigen that is predicted to function as a channel or transporter protein. In addition to prostate cancers, STEAP is also upregulated in bladder, colon and ovarian cancers.

Note: This product is for in vitro research use only