

## FXR1 Antibody

Catalog No: #37580

Orders: [order@signalwayantibody.com](mailto:order@signalwayantibody.com)Support: [tech@signalwayantibody.com](mailto:tech@signalwayantibody.com)

## Description

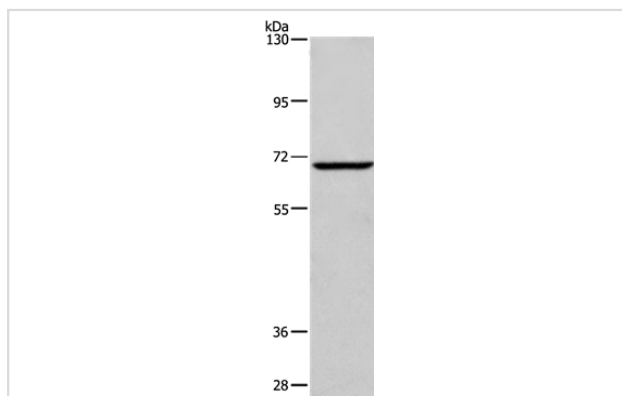
Product Name	FXR1 Antibody
Host Species	Rabbit
Clonality	Polyclonal
Purification	Antigen affinity purification.
Applications	WB IHC
Species Reactivity	Hu Ms Rt
Specificity	The antibody detects endogenous levels of total FXR1 protein.
Immunogen Type	Peptide
Immunogen Description	Synthetic peptide corresponding to a region derived from internal residues of human fragile X mental retardation, autosomal homolog 1
Target Name	FXR1
Other Names	FXR1P
Accession No.	Swiss-Prot#: P51114NCBI Gene ID: 8087Gene Accssion: NP_005078
Uniprot	P51114
GeneID	8087;
SDS-PAGE MW	70kd
Concentration	1.1mg/ml
Formulation	Rabbit IgG in pH7.4 PBS, 0.05% NaN <sub>3</sub> , 40% Glycerol.
Storage	Store at -20°C

## Application Details

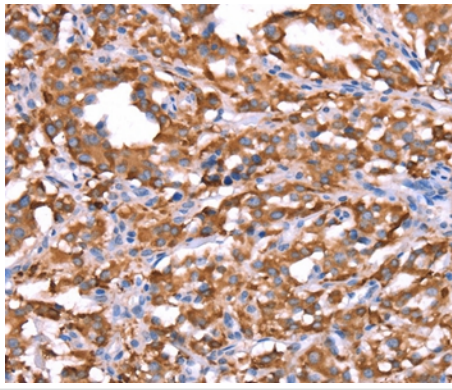
Western blotting: 1:200-1:1000

Immunohistochemistry: 1:25-1:100

## Images



Gel: 6%SDS-PAGE  
Lysate: 40ug 231 cell  
Primary antibody: 1/300 dilution  
Secondary antibody dilution: 1/8000  
Exposure time: 10 minutes



Immunohistochemical analysis of paraffin-embedded Human thyroid cancer tissue using #37580 at dilution 1/20.

## Background

The protein encoded by this gene is an RNA binding protein that interacts with the functionally-similar proteins FMR1 and FXR2. These proteins shuttle between the nucleus and cytoplasm and associate with polyribosomes, predominantly with the 60S ribosomal subunit. Three transcript variants encoding different isoforms have been found for this gene

Note: This product is for in vitro research use only