

SLC6A1 Antibody

Catalog No: #37581

Orders: order@signalwayantibody.com

Support: tech@signalwayantibody.com

Description

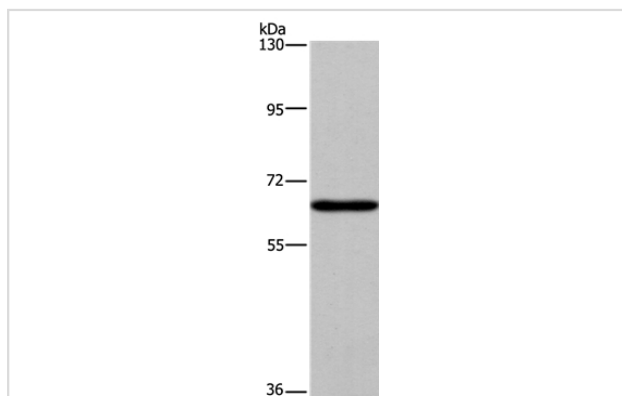
Product Name	SLC6A1 Antibody
Host Species	Rabbit
Clonality	Polyclonal
Purification	Antigen affinity purification.
Applications	WB IHC
Species Reactivity	Hu
Specificity	The antibody detects endogenous levels of total SLC6A1 protein.
Immunogen Type	Peptide
Immunogen Description	Synthetic peptide corresponding to residues near the C terminal of human solute carrier family 6 (neurotransmitter transporter), member 1
Target Name	SLC6A1
Other Names	GAT1; GABATR; GABATHG
Accession No.	Swiss-Prot#: P30531NCBI Gene ID: 6529Gene Accssion: NP_003033
Uniprot	P30531
GeneID	6529;
SDS-PAGE MW	67kd
Concentration	1.1mg/ml
Formulation	Rabbit IgG in pH7.4 PBS, 0.05% NaN ₃ , 40% Glycerol.
Storage	Store at -20°C

Application Details

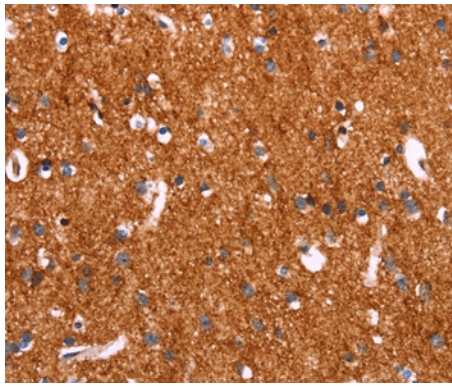
Western blotting: 1:200-1:1000

Immunohistochemistry: 1:25-1:100

Images



Gel: 6%SDS-PAGE
Lysate: 40ug HepG2 cell
Primary antibody: 1/200 dilution
Secondary antibody dilution: 1/8000
Exposure time: 5 minutes



Immunohistochemical analysis of paraffin-embedded Human brain tissue using #37581 at dilution 1/20.

Background

The SLC6A1 gene encodes a gamma-aminobutyric acid (GABA) transporter, which removes GABA from the synaptic cleft. The cDNA contained an open reading frame encoding a hydrophobic protein of 599 amino acids with a calculated molecular weight of 67,022 daltons. Hydropathy analysis showed 12 potential transmembrane segments. The human protein is highly homologous to that from rat brain?

Note: This product is for in vitro research use only