

GAGE7 Antibody

Catalog No: #37585

Orders: order@signalwayantibody.comSupport: tech@signalwayantibody.com

Description

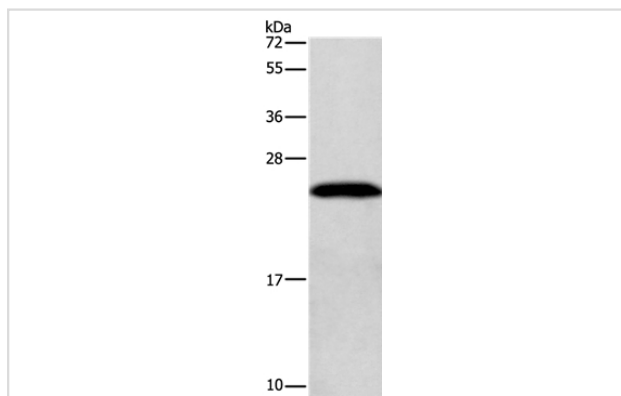
Product Name	GAGE7 Antibody
Host Species	Rabbit
Clonality	Polyclonal
Purification	Antigen affinity purification.
Applications	WB IHC
Species Reactivity	Hu
Specificity	The antibody detects endogenous levels of total GAGE7 protein.
Immunogen Type	Peptide
Immunogen Description	Synthetic peptide corresponding to residues near the C terminal of human G antigen 12I
Target Name	GAGE7
Other Names	AL4; CT4.7; GAGE7B; GAGE-7B
Accession No.	Swiss-Prot#: P0CL82NCBI Gene ID: 26748Gene Accssion: NP_001468
Uniprot	P0CL81
GeneID	100008586;2579;26748;645073;
SDS-PAGE MW	13kd
Concentration	1.3mg/ml
Formulation	Rabbit IgG in pH7.4 PBS, 0.05% NaN ₃ , 40% Glycerol.
Storage	Store at -20°C

Application Details

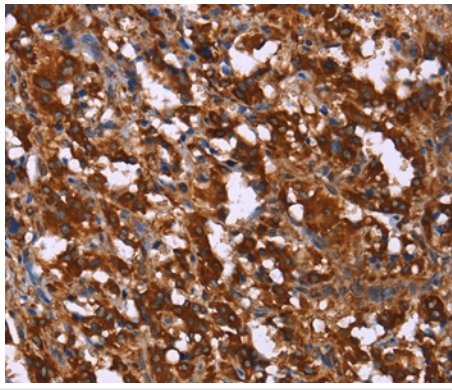
Western blotting: 1:200-1:1000

Immunohistochemistry: 1:50-1:200

Images



Gel: 10%SDS-PAGE
Lysate: 40ug K562 cell
Primary antibody: 1/200 dilution
Secondary antibody dilution: 1/8000
Exposure time: 20 seconds



Immunohistochemical analysis of paraffin-embedded Human thyroid cancer tissue using #37585 at dilution 1/20.

Background

This gene belongs to a family of genes that are expressed in a variety of tumors but not in normal tissues, except for the testis. The sequences of the family members are highly related but differ by scattered nucleotide substitutions. The antigenic peptide YYWPRPRRY, which is also encoded by several other family members, is recognized by autologous cytolytic T lymphocytes.

Note: This product is for in vitro research use only